

Residences

RIVNGE

BAL HARBOUR

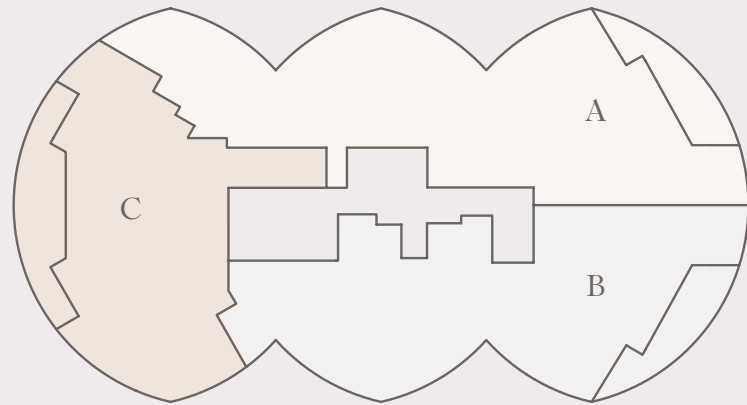


A wide-angle photograph of a modern balcony overlooking the ocean at sunset. The balcony features a light-colored wooden lounge chair with a white cushion, two dark cylindrical side tables, and a glass railing. The sun is low on the horizon, casting a warm glow over the water and sky. The balcony floor is a light, neutral color. The overall atmosphere is serene and luxurious.

A Sublime Vision

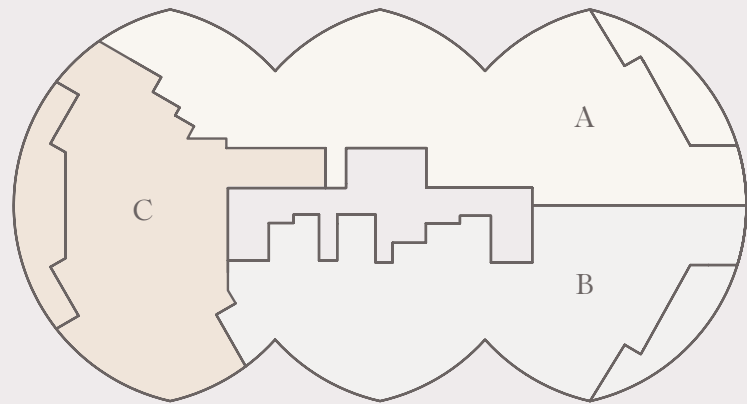
Rivage Bal Harbour takes a rare and unique opportunity—the last three acres of pristine oceanfront in Bal Harbour—and does it full justice. The dazzling glass tower by SOM is a beacon of modern living that houses lavish, refined interiors by Rottet Studio. All of this is immersed in the lush, tropical landscape sculpted by internationally acclaimed Enea Garden Design.

z



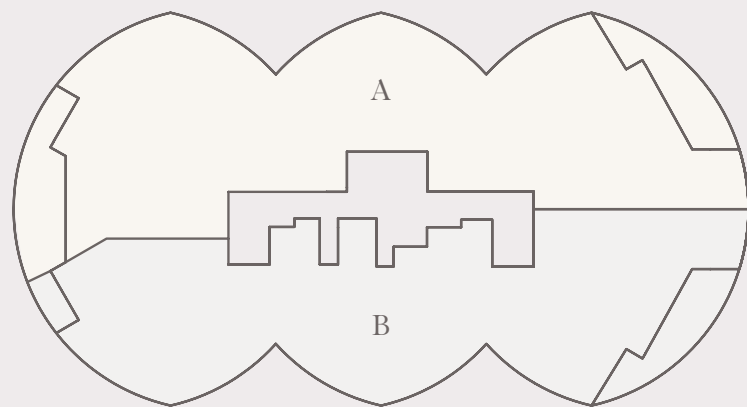
RESIDENCES A, B, C; FLOOR 2

INTRACOASTAL
WATERS



RESIDENCES A, B, C; FLOORS 3-17

ATLANTIC OCEAN



RESIDENCES A, B; FLOORS 18-21

Residences Overview

Direct private-elevator entry to each residence

10-foot ceilings and floor-to-ceiling windows

Terraces up to 12 feet deep offer direct views of the Atlantic Ocean and Biscayne Bay

Spacious living, dining and entertaining area

Custom kitchens with Sub-Zero and Wolf appliance suite (including gas cooktop and full-height wine cellar),

Dornbracht fixtures, wood and marble finishes

Custom bathroom and closet suites

designed by Rottet Studio feature marble,

white oak and Dornbracht fixtures

Primary bathroom with travertine flooring and walls, marble slab countertop, lacquered vanity,

stone-clad bathtub, custom mirrors

and light fixtures

Fully finished wardrobe in every bedroom, with oak millwork and leather-lined drawers



Residence A, Floor 2

4 Bedrooms

5 Bathrooms

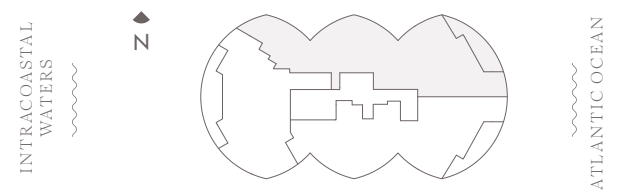
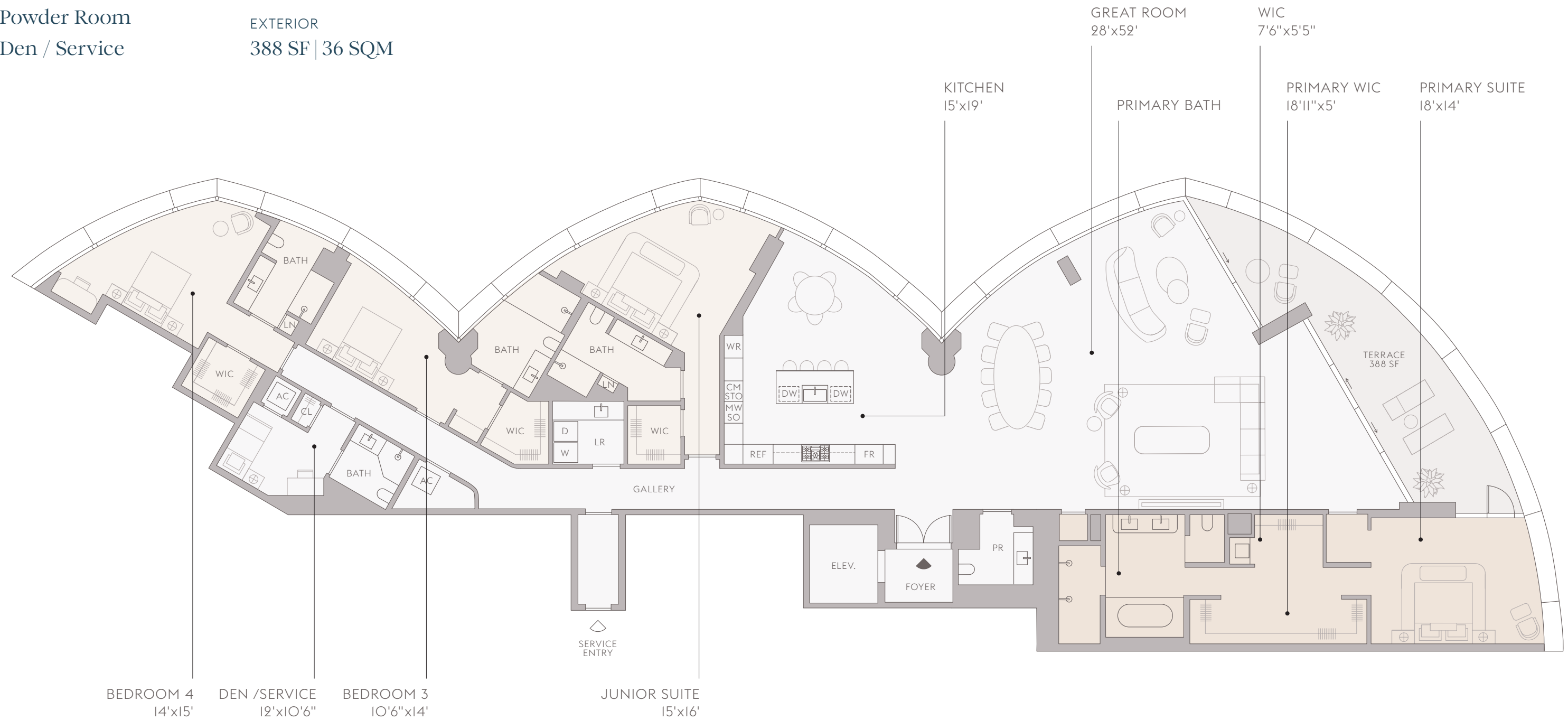
Powder Room

Den / Service

INTERIOR
4,784 SF | 444 SQM

EXTERIOR
388 SF | 36 SQM

TOTAL
5,172 SF | 480 SQM

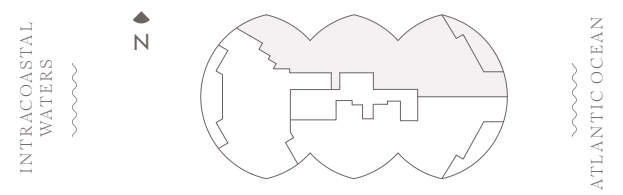
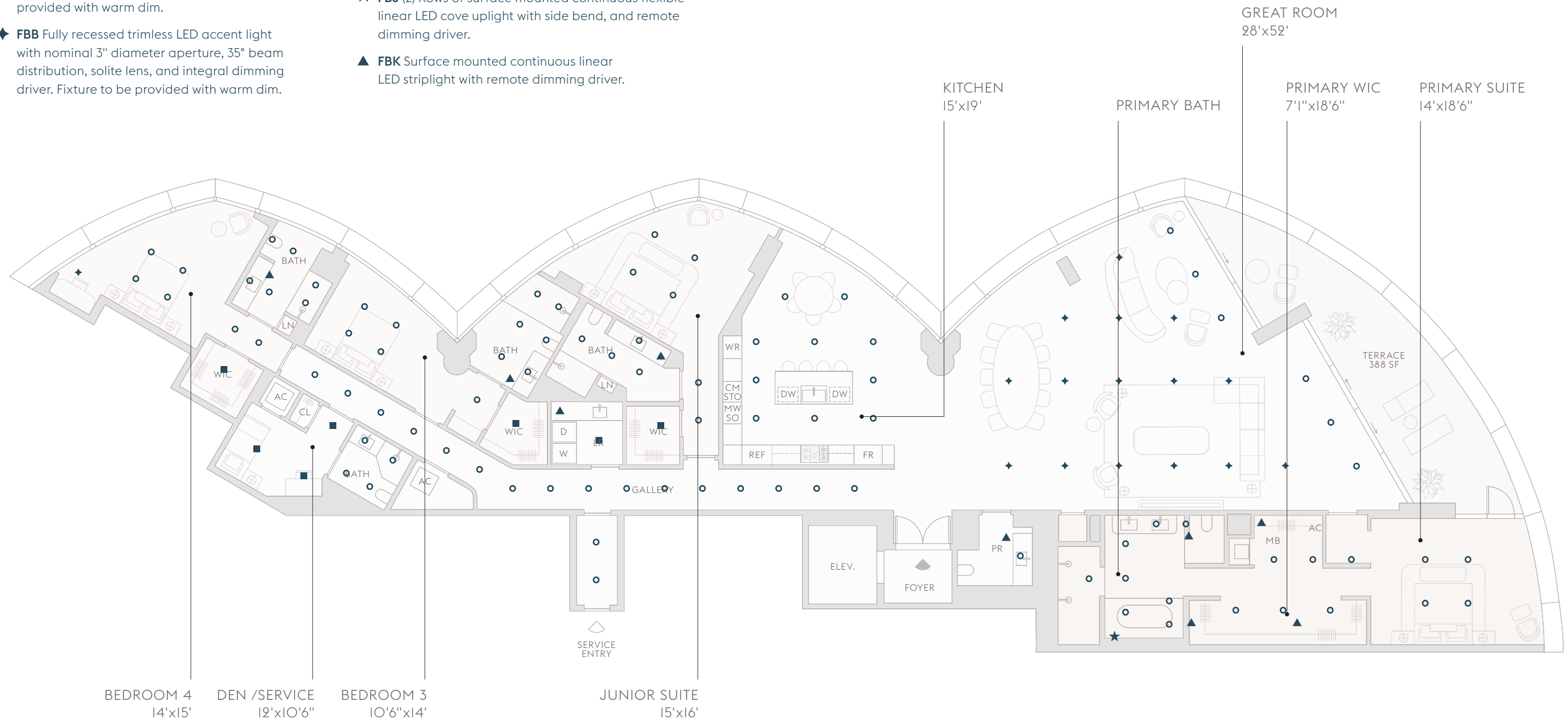


The dimensions stated for any depicted Unit floor plan are approximate because there are various recognized methods for calculating the square footage of a Unit. The square footage stated herein is calculated from the exterior boundaries of the exterior walls to the centerline of interior demising walls without deductions for cutouts, curves, or architectural features. This method typically results in quoted dimensions greater than the dimensions that would be determined by using other accepted methods. The floor plan, Unit layout, locations of windows, doors, closets, plumbing fixtures, mechanical equipment, appliances, structural elements, architectural design elements, and the uses, configurations, and entries to rooms may change based on final approved plans, permitting, and completed construction. The furniture layout and the uses of space illustrated are suggested uses only and not intended to guaranty any specific use of space or accommodation of specific furnishings. Consult the Developer's Prospectus to learn what is included with a Unit purchase and to review the Unit square footage calculation method to be relied upon. 2023© with all rights reserved.

Residence A, Floor 2 Ceiling Plan

- **FBA** Fully recessed trimless LED downlight with nominal 3" diameter aperture, 55° beam distribution, solite lens, and integral driver. Fixture to be provided with warm dim.
- ◆ **FBB** Fully recessed trimless LED accent light with nominal 3" diameter aperture, 35° beam distribution, solite lens, and integral dimming driver. Fixture to be provided with warm dim.

- **FBW** Surface mounted LED downlight with nominal 8" diameter housing.
- ★ **FBJ (2)** Rows of surface mounted continuous flexible linear LED cove uplight with side bend, and remote dimming driver.
- ▲ **FBK** Surface mounted continuous linear LED striplight with remote dimming driver.



The dimensions stated for any depicted Unit floor plan are approximate because there are various recognized methods for calculating the square footage of a Unit. The square footage stated herein is calculated from the exterior boundaries of the exterior walls to the centerline of interior demising walls without deductions for cutouts, curves, or architectural features. This method typically results in quoted dimensions greater than the dimensions that would be determined by using other accepted methods. The floor plan, Unit layout, locations of windows, doors, closets, plumbing fixtures, mechanical equipment, appliances, structural elements, architectural design elements, and the uses, configurations, and entries to rooms may change based on final approved plans, permitting, and completed construction. The furniture layout and the uses of space illustrated are suggested uses only and not intended to guaranty any specific use of space or accommodation of specific furnishings. Consult the Developer's Prospectus to learn what is included with a Unit purchase and to review the Unit square footage calculation method to be relied upon. 2023© with all rights reserved.

Residence A, Floors 3-17

4 Bedrooms

5 Bathrooms

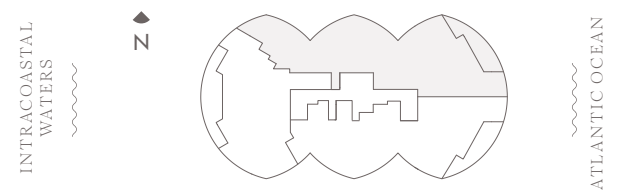
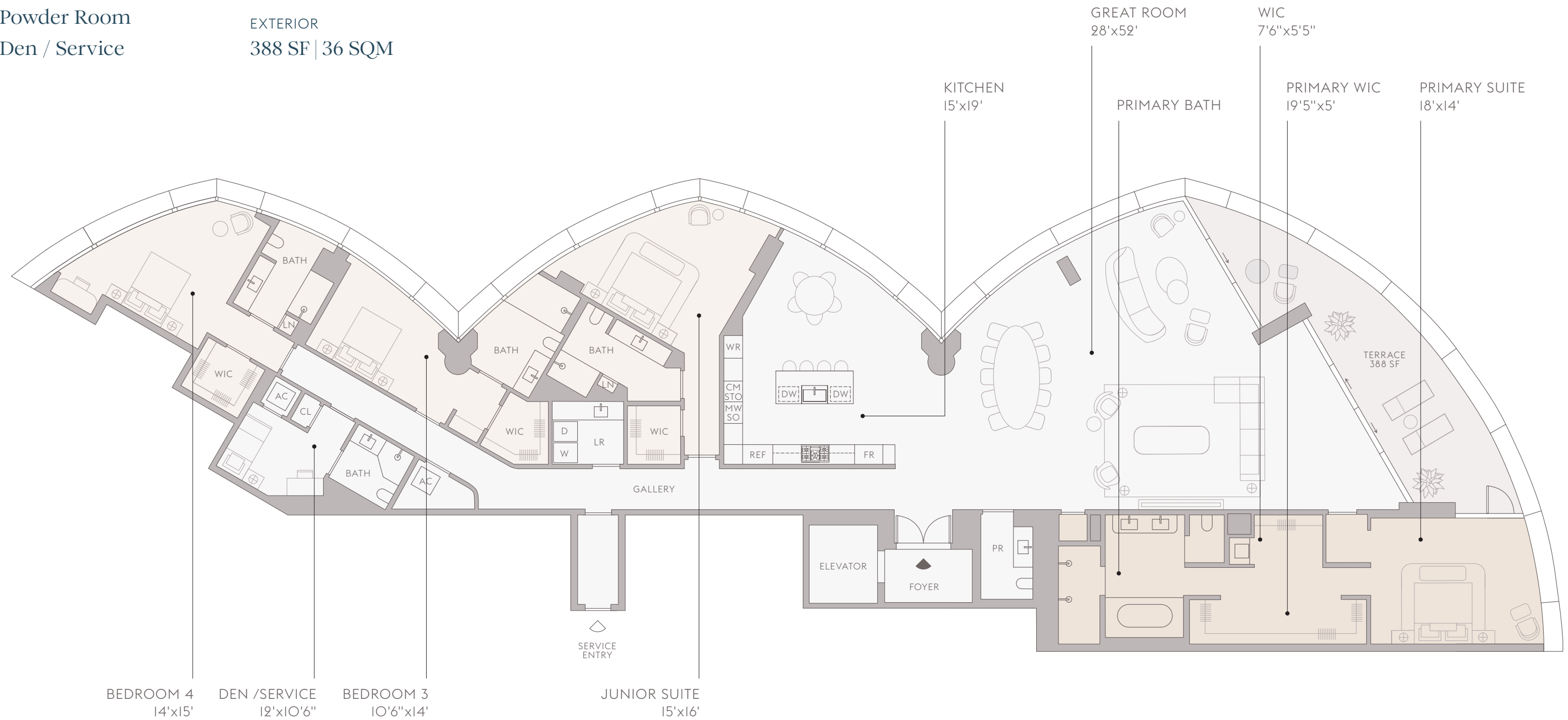
Powder Room

Den / Service

INTERIOR
4,810 SF | 447 SQM

EXTERIOR
388 SF | 36 SQM

TOTAL
5,198 SF | 483 SQM



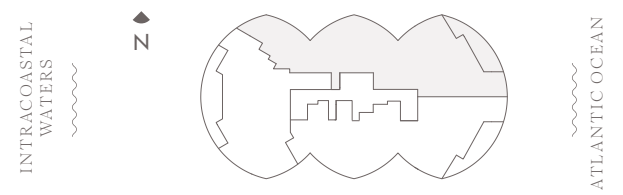
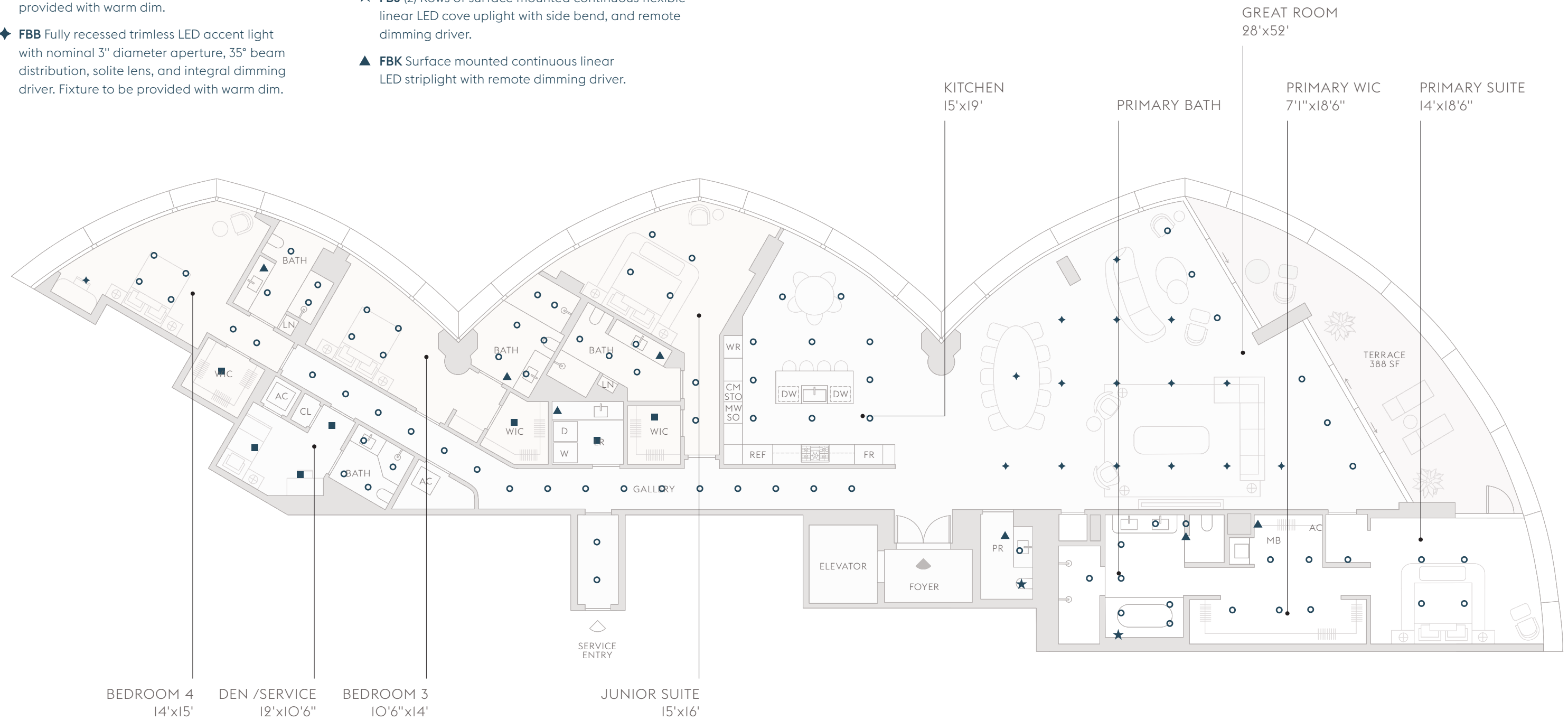
The dimensions stated for any depicted Unit floor plan are approximate because there are various recognized methods for calculating the square footage of a Unit. The square footage stated herein is calculated from the exterior boundaries of the exterior walls to the centerline of interior demising walls without deductions for cutouts, curves, or architectural features. This method typically results in quoted dimensions greater than the dimensions that would be determined by using other accepted methods. The floor plan, Unit layout, locations of windows, doors, closets, plumbing fixtures, mechanical equipment, appliances, structural elements, architectural design elements, and the uses, configurations, and entries to rooms may change based on final approved plans, permitting, and completed construction. The furniture layout and the uses of space illustrated are suggested uses only and not intended to guaranty any specific use of space or accommodation of specific furnishings. Consult the Developer's Prospectus to learn what is included with a Unit purchase and to review the Unit square footage calculation method to be relied upon. 2023© with all rights reserved.

Residence A, Floors 3-17

Ceiling Plan

- **FBA** Fully recessed trimless LED downlight with nominal 3" diameter aperture, 55° beam distribution, solite lens, and integral driver. Fixture to be provided with warm dim.
- ◆ **FBB** Fully recessed trimless LED accent light with nominal 3" diameter aperture, 35° beam distribution, solite lens, and integral dimming driver. Fixture to be provided with warm dim.

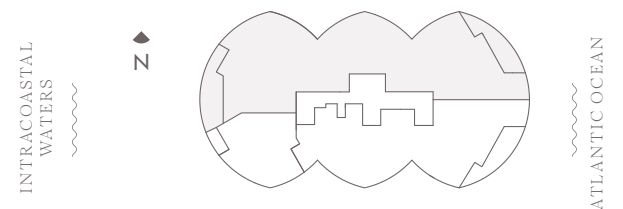
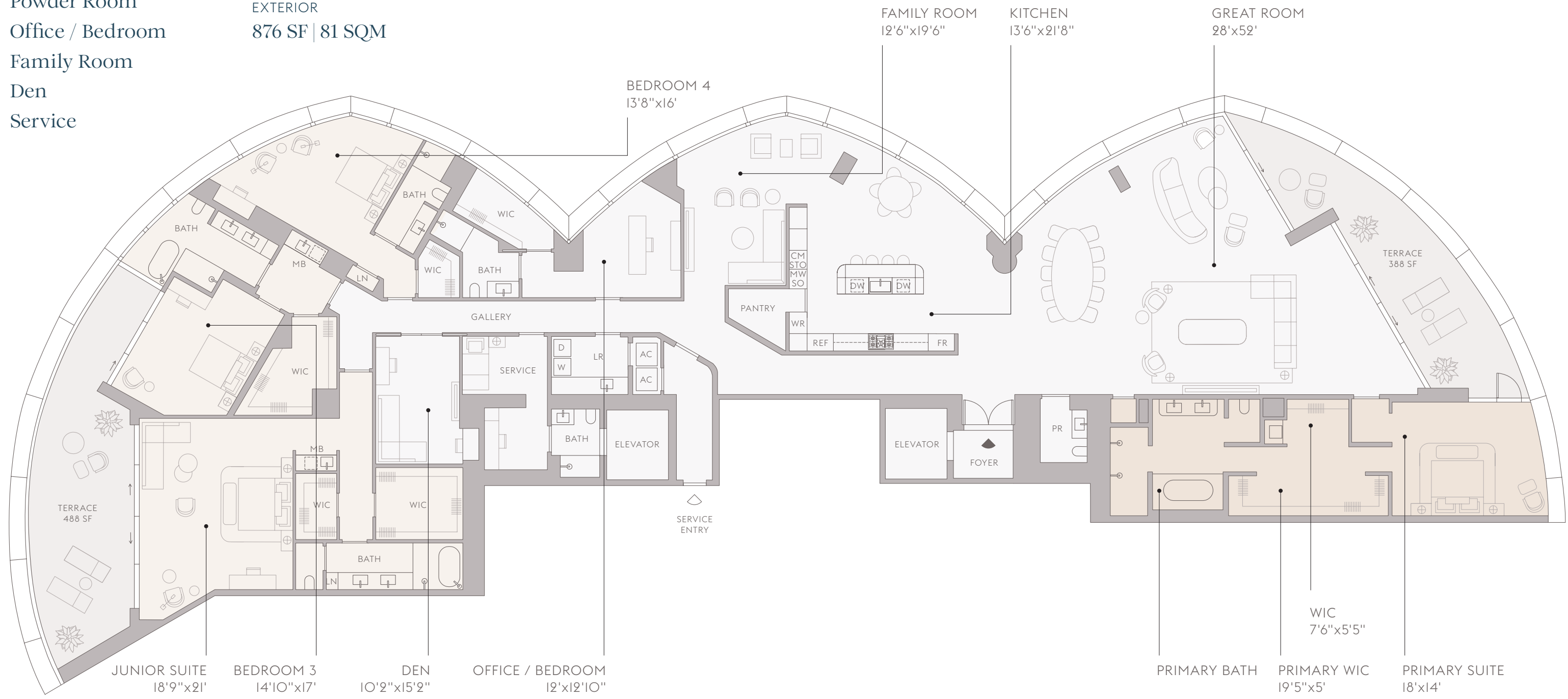
- **FBW** Surface mounted LED downlight with nominal 8" diameter housing.
- ★ **FBJ (2)** Rows of surface mounted continuous flexible linear LED cove uplight with side bend, and remote dimming driver.
- ▲ **FBK** Surface mounted continuous linear LED striplight with remote dimming driver.



The dimensions stated for any depicted Unit floor plan are approximate because there are various recognized methods for calculating the square footage of a Unit. The square footage stated herein is calculated from the exterior boundaries of the exterior walls to the centerline of interior demising walls without deductions for cutouts, curves, or architectural features. This method typically results in quoted dimensions greater than the dimensions that would be determined by using other accepted methods. The floor plan, Unit layout, locations of windows, doors, closets, plumbing fixtures, mechanical equipment, appliances, structural elements, architectural design elements, and the uses, configurations, and entries to rooms may change based on final approved plans, permitting, and completed construction. The furniture layout and the uses of space illustrated are suggested uses only and not intended to guaranty any specific use of space or accommodation of specific furnishings. Consult the Developer's Prospectus to learn what is included with a Unit purchase and to review the Unit square footage calculation method to be relied upon. 2023© with all rights reserved.

Residence A, Floors 18-21

4 Bedrooms	INTERIOR	TOTAL
5 Bathrooms	6,655 SF 618 SQM	7,531 SF 700 SQM
Powder Room	EXTERIOR	
Office / Bedroom	876 SF 81 SQM	
Family Room		
Den		
Service		



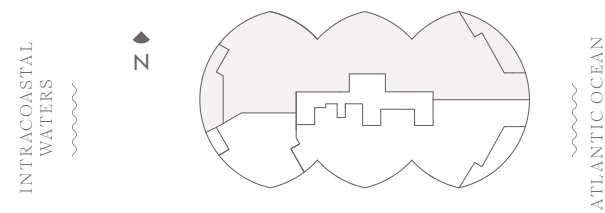
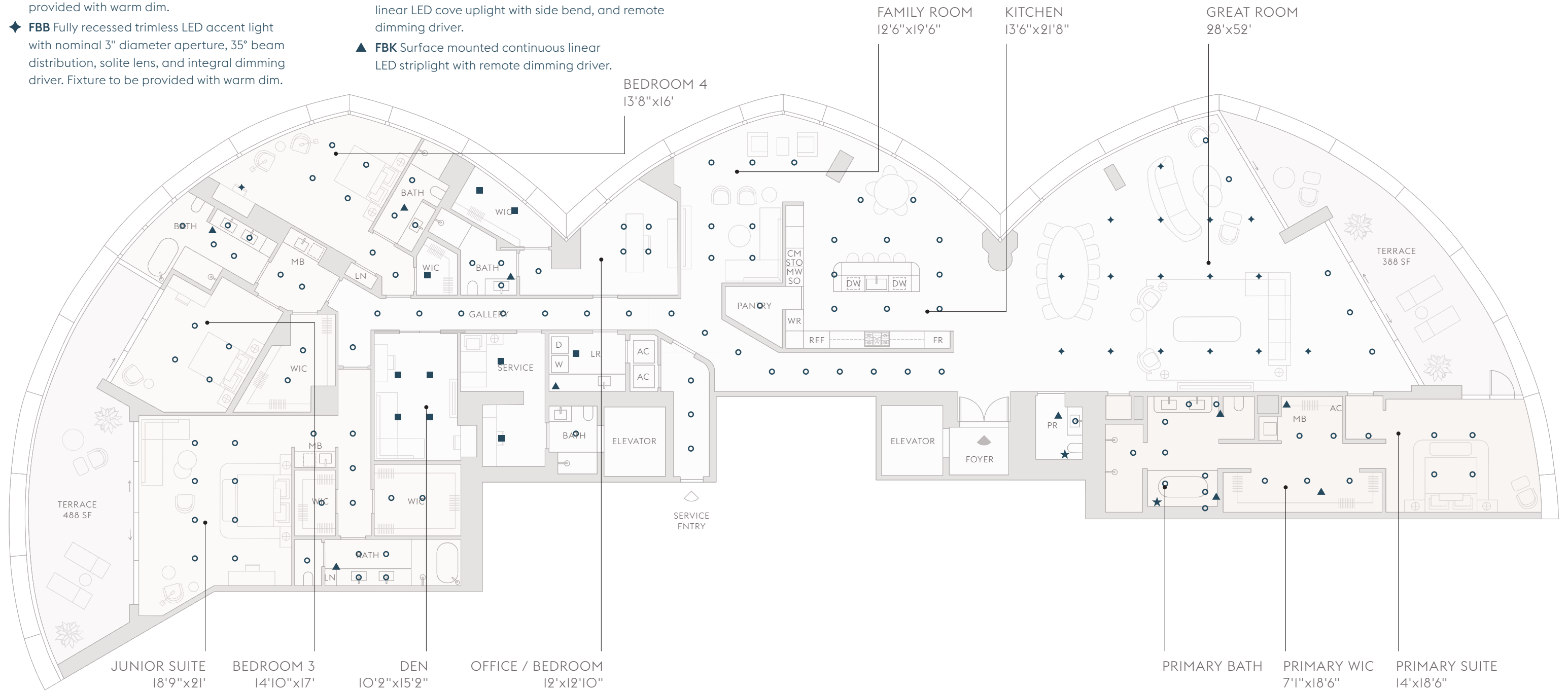
The dimensions stated for any depicted Unit floor plan are approximate because there are various recognized methods for calculating the square footage of a Unit. The square footage stated herein is calculated from the exterior boundaries of the exterior walls to the centerline of interior demising walls without deductions for cutouts, curves, or architectural features. This method typically results in quoted dimensions greater than the dimensions that would be determined by using other accepted methods. The floor plan, Unit layout, locations of windows, doors, closets, plumbing fixtures, mechanical equipment, appliances, structural elements, architectural design elements, and the uses, configurations, and entries to rooms may change based on final approved plans, permitting, and completed construction. The furniture layout and the uses of space illustrated are suggested uses only and not intended to guaranty any specific use of space or accommodation of specific furnishings. Consult the Developer's Prospectus to learn what is included with a Unit purchase and to review the Unit square footage calculation method to be relied upon. 2023© with all rights reserved.

Residence A, Floors 18–21

Ceiling Plan

- **FBA** Fully recessed trimless LED downlight with nominal 3" diameter aperture, 55° beam distribution, solite lens, and integral driver. Fixture to be provided with warm dim.
- ◆ **FBB** Fully recessed trimless LED accent light with nominal 3" diameter aperture, 35° beam distribution, solite lens, and integral dimming driver. Fixture to be provided with warm dim.

- **FBW** Surface mounted LED downlight with nominal 8" diameter housing.
- ★ **FBJ (2)** Rows of surface mounted continuous flexible linear LED cove uplight with side bend, and remote dimming driver.
- ▲ **FBK** Surface mounted continuous linear LED striplight with remote dimming driver.



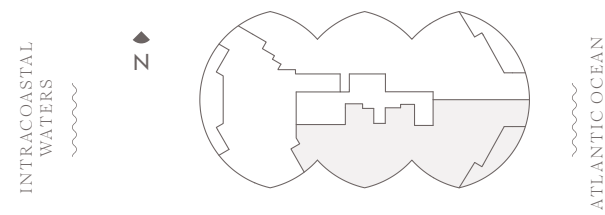
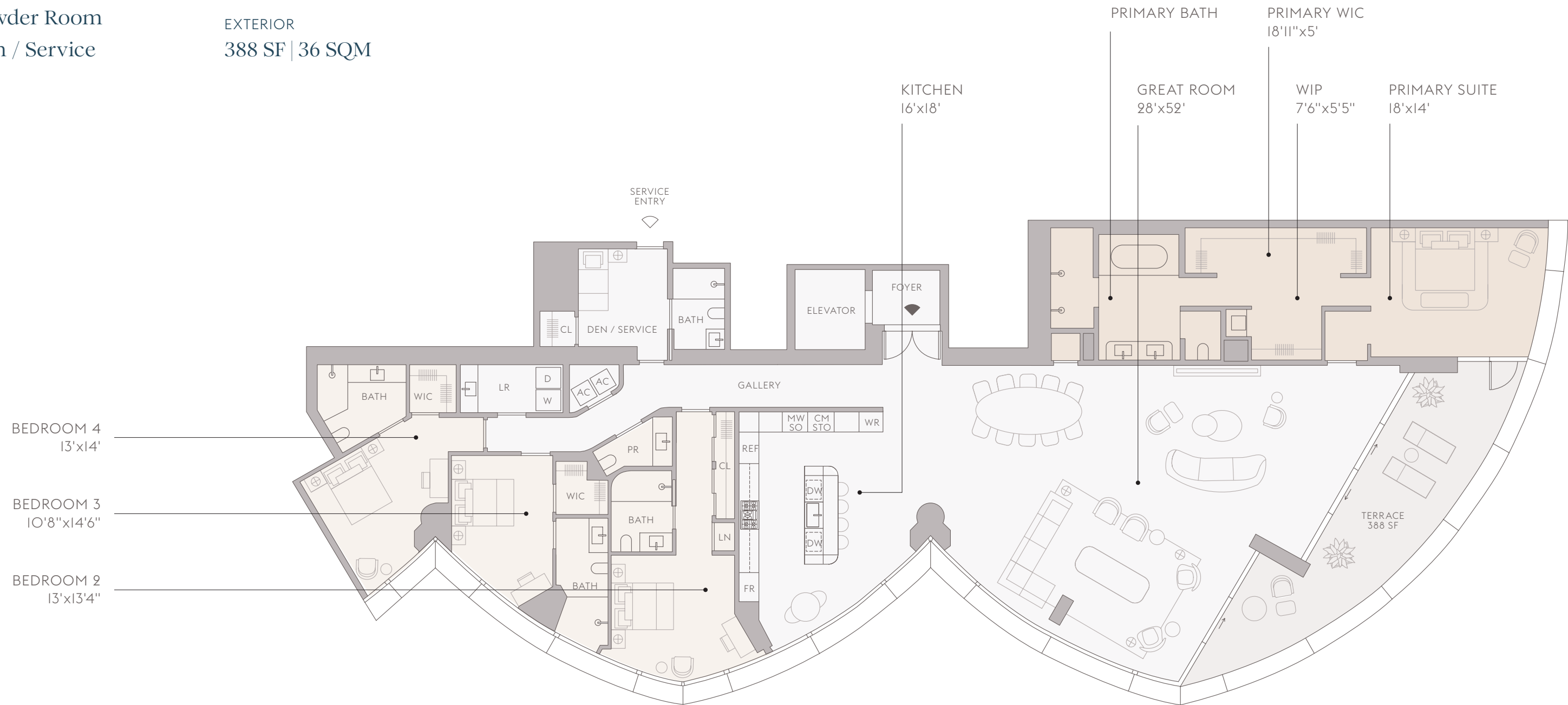
The dimensions stated for any depicted Unit floor plan are approximate because there are various recognized methods for calculating the square footage of a Unit. The square footage stated herein is calculated from the exterior boundaries of the exterior walls to the centerline of interior demising walls without deductions for cutouts, curves, or architectural features. This method typically results in quoted dimensions greater than the dimensions that would be determined by using other accepted methods. The floor plan, Unit layout, locations of windows, doors, closets, plumbing fixtures, mechanical equipment, appliances, structural elements, architectural design elements, and the uses, configurations, and entries to rooms may change based on final approved plans, permitting, and completed construction. The furniture layout and the uses of space illustrated are suggested uses only and not intended to guaranty any specific use of space or accommodation of specific furnishings. Consult the Developer's Prospectus to learn what is included with a Unit purchase and to review the Unit square footage calculation method to be relied upon. 2023© with all rights reserved.

Residence B, Floor 2

4 Bedrooms
 5 Bathrooms
 Powder Room
 Den / Service

INTERIOR
 4,215 SF | 392 SQM
 EXTERIOR
 388 SF | 36 SQM

TOTAL
 4,603 SF | 428 SQM

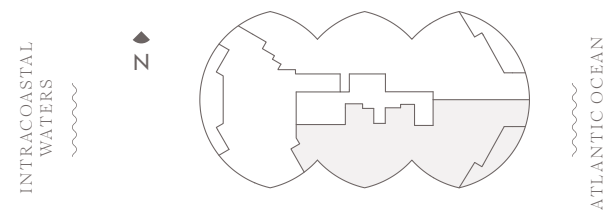
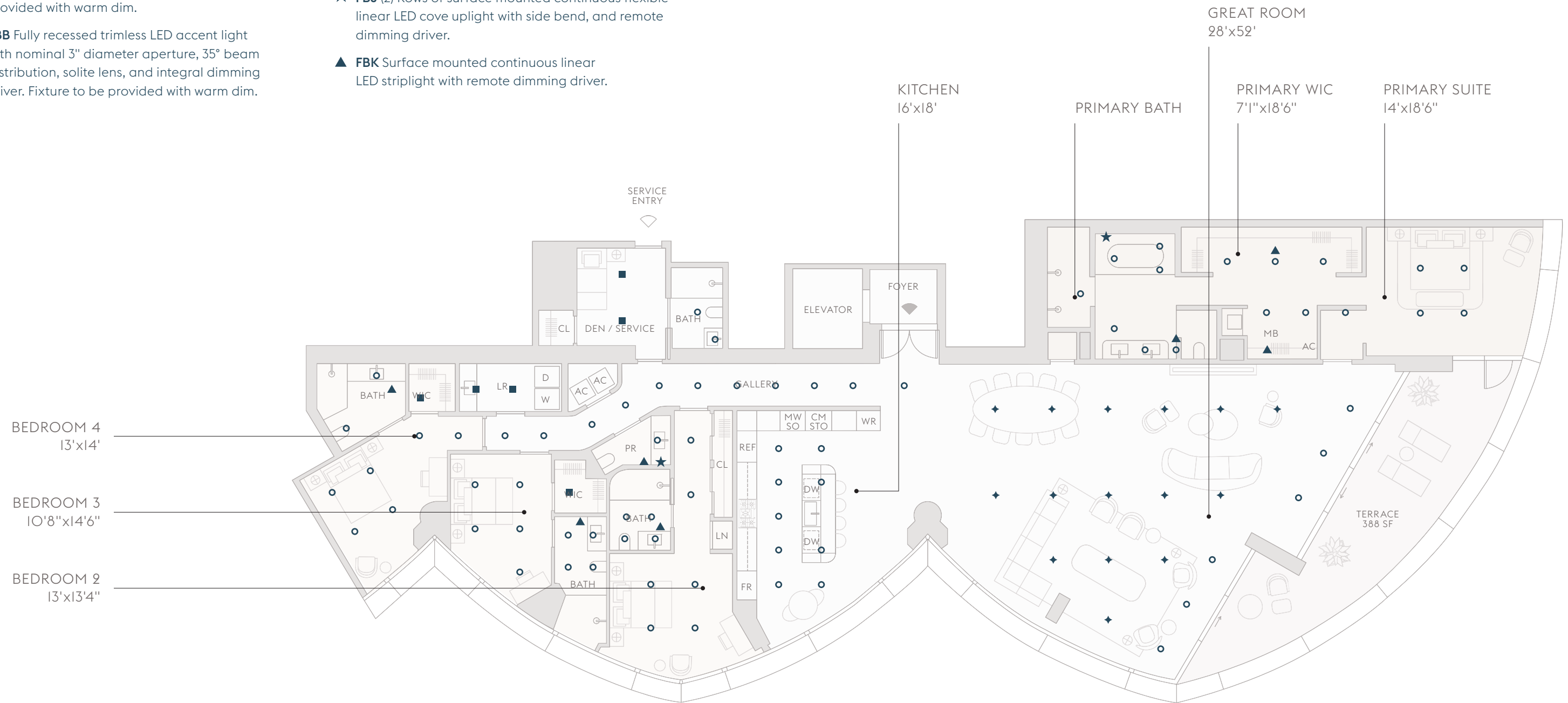


The dimensions stated for any depicted Unit floor plan are approximate because there are various recognized methods for calculating the square footage of a Unit. The square footage stated herein is calculated from the exterior boundaries of the exterior walls to the centerline of interior demising walls without deductions for cutouts, curves, or architectural features. This method typically results in quoted dimensions greater than the dimensions that would be determined by using other accepted methods. The floor plan, Unit layout, locations of windows, doors, closets, plumbing fixtures, mechanical equipment, appliances, structural elements, architectural design elements, and the uses, configurations, and entries to rooms may change based on final approved plans, permitting, and completed construction. The furniture layout and the uses of space illustrated are suggested uses only and not intended to guaranty any specific use of space or accommodation of specific furnishings. Consult the Developer's Prospectus to learn what is included with a Unit purchase and to review the Unit square footage calculation method to be relied upon. 2023© with all rights reserved.

Residence B, Floor 2 Ceiling Plan

- **FBA** Fully recessed trimless LED downlight with nominal 3" diameter aperture, 55° beam distribution, solite lens, and integral driver. Fixture to be provided with warm dim.
- ◆ **FBB** Fully recessed trimless LED accent light with nominal 3" diameter aperture, 35° beam distribution, solite lens, and integral dimming driver. Fixture to be provided with warm dim.

- **FBW** Surface mounted LED downlight with nominal 8" diameter housing.
- ★ **FBJ** (2) Rows of surface mounted continuous flexible linear LED cove uplight with side bend, and remote dimming driver.
- ▲ **FBK** Surface mounted continuous linear LED striplight with remote dimming driver.



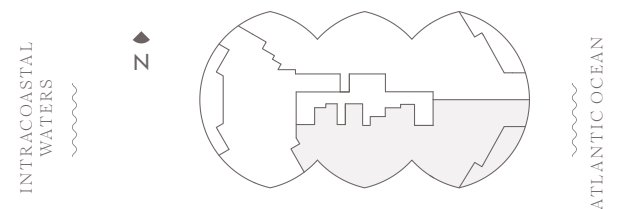
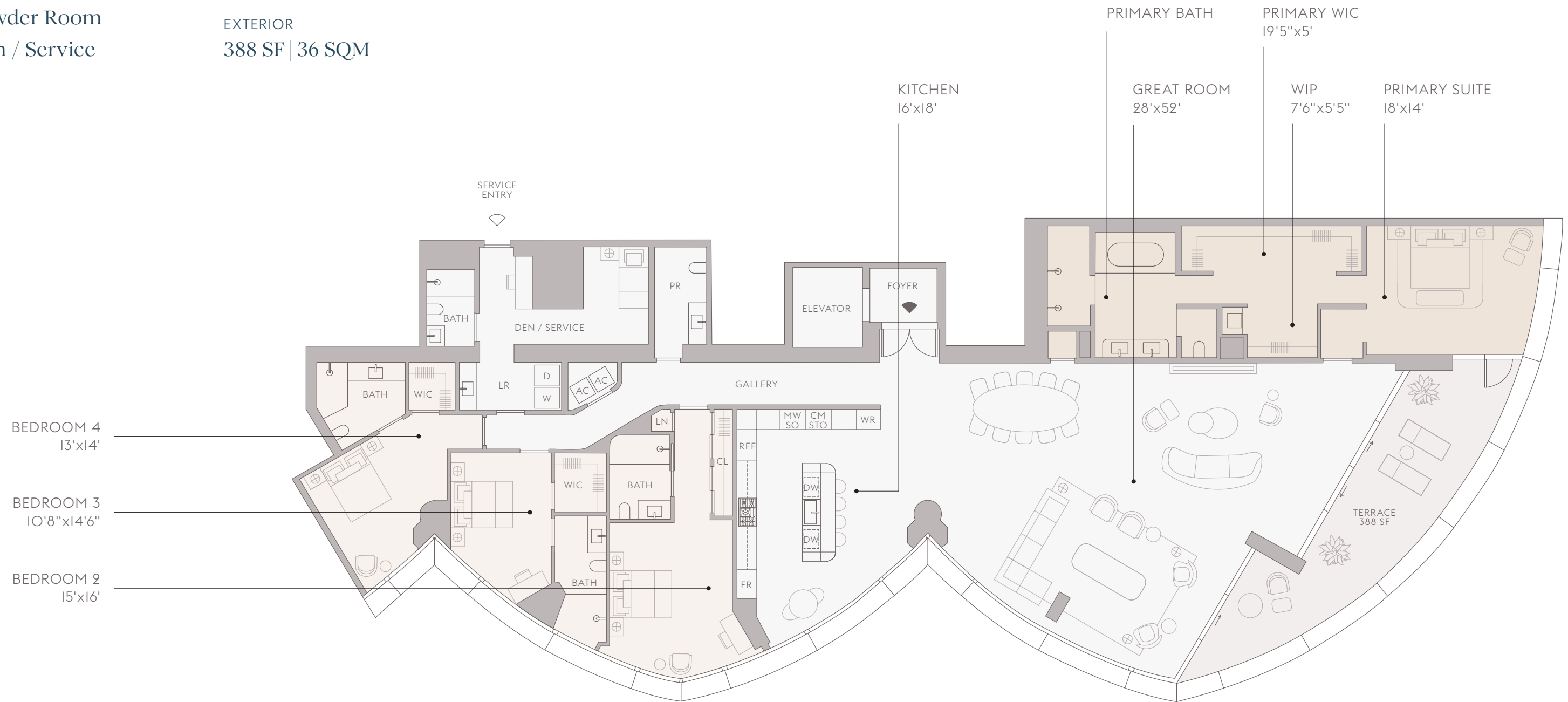
The dimensions stated for any depicted Unit floor plan are approximate because there are various recognized methods for calculating the square footage of a Unit. The square footage stated herein is calculated from the exterior boundaries of the exterior walls to the centerline of interior demising walls without deductions for cutouts, curves, or architectural features. This method typically results in quoted dimensions greater than the dimensions that would be determined by using other accepted methods. The floor plan, Unit layout, locations of windows, doors, closets, plumbing fixtures, mechanical equipment, appliances, structural elements, architectural design elements, and the uses, configurations, and entries to rooms may change based on final approved plans, permitting, and completed construction. The furniture layout and the uses of space illustrated are suggested uses only and not intended to guaranty any specific use of space or accommodation of specific furnishings. Consult the Developer's Prospectus to learn what is included with a Unit purchase and to review the Unit square footage calculation method to be relied upon. 2023© with all rights reserved.

Residence B, Floors 3-17

4 Bedrooms
 5 Bathrooms
 Powder Room
 Den / Service

INTERIOR
 4,358 SF | 405 SQM
 EXTERIOR
 388 SF | 36 SQM

TOTAL
 4,746 SF | 441 SQM



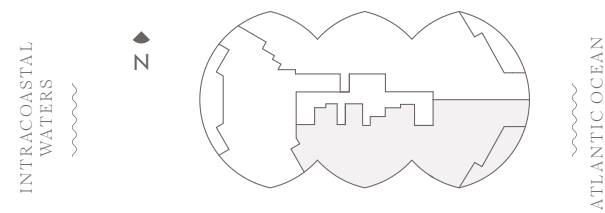
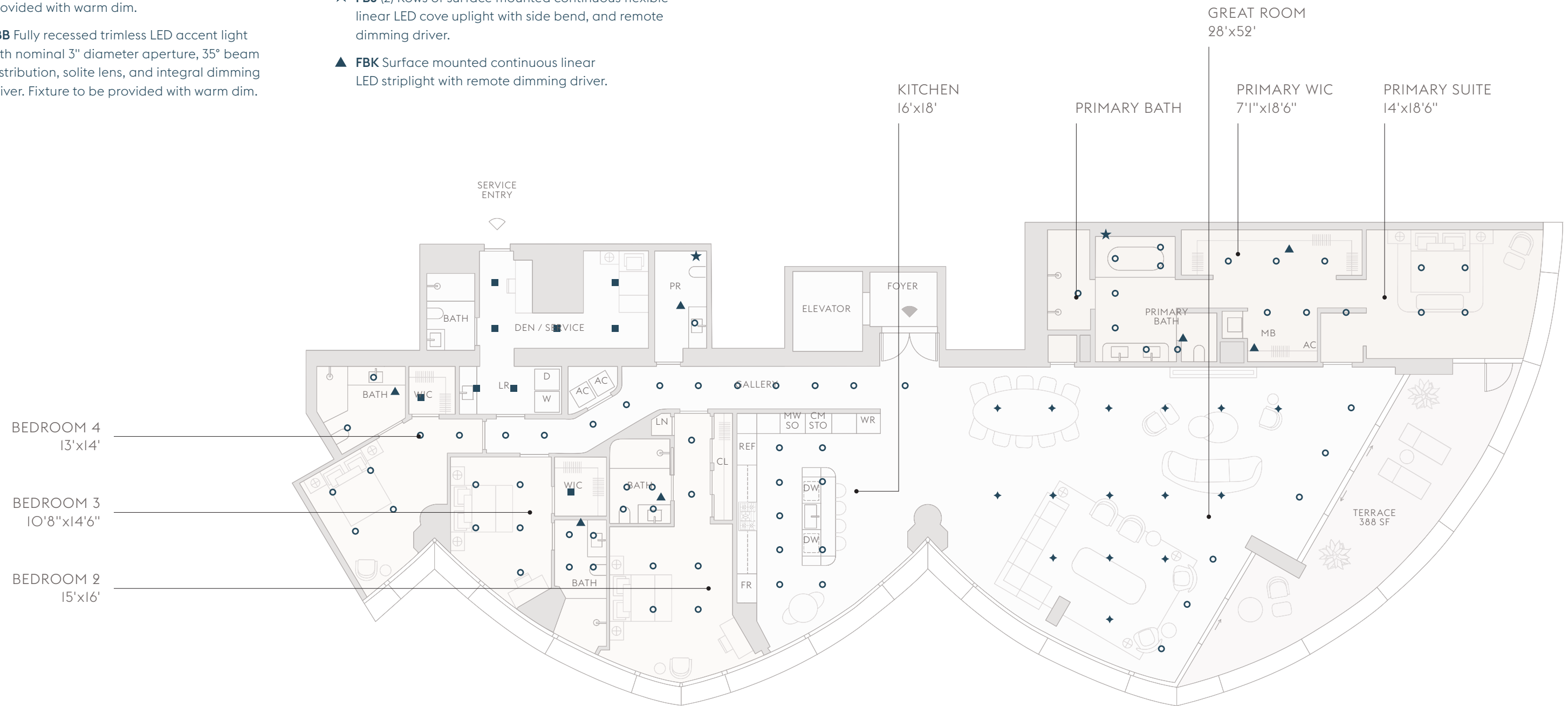
The dimensions stated for any depicted Unit floor plan are approximate because there are various recognized methods for calculating the square footage of a Unit. The square footage stated herein is calculated from the exterior boundaries of the exterior walls to the centerline of interior demising walls without deductions for cutouts, curves, or architectural features. This method typically results in quoted dimensions greater than the dimensions that would be determined by using other accepted methods. The floor plan, Unit layout, locations of windows, doors, closets, plumbing fixtures, mechanical equipment, appliances, structural elements, architectural design elements, and the uses, configurations, and entries to rooms may change based on final approved plans, permitting, and completed construction. The furniture layout and the uses of space illustrated are suggested uses only and not intended to guaranty any specific use of space or accommodation of specific furnishings. Consult the Developer's Prospectus to learn what is included with a Unit purchase and to review the Unit square footage calculation method to be relied upon. 2023© with all rights reserved.

Residence B, Floors 3-17

Ceiling Plan

- **FBA** Fully recessed trimless LED downlight with nominal 3" diameter aperture, 55° beam distribution, solite lens, and integral driver. Fixture to be provided with warm dim.
- ◆ **FBB** Fully recessed trimless LED accent light with nominal 3" diameter aperture, 35° beam distribution, solite lens, and integral dimming driver. Fixture to be provided with warm dim.

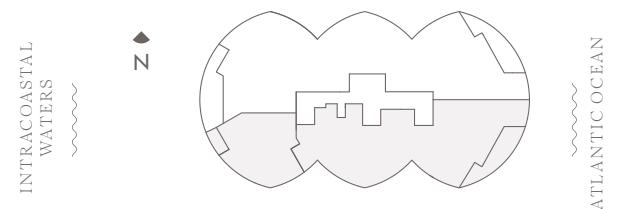
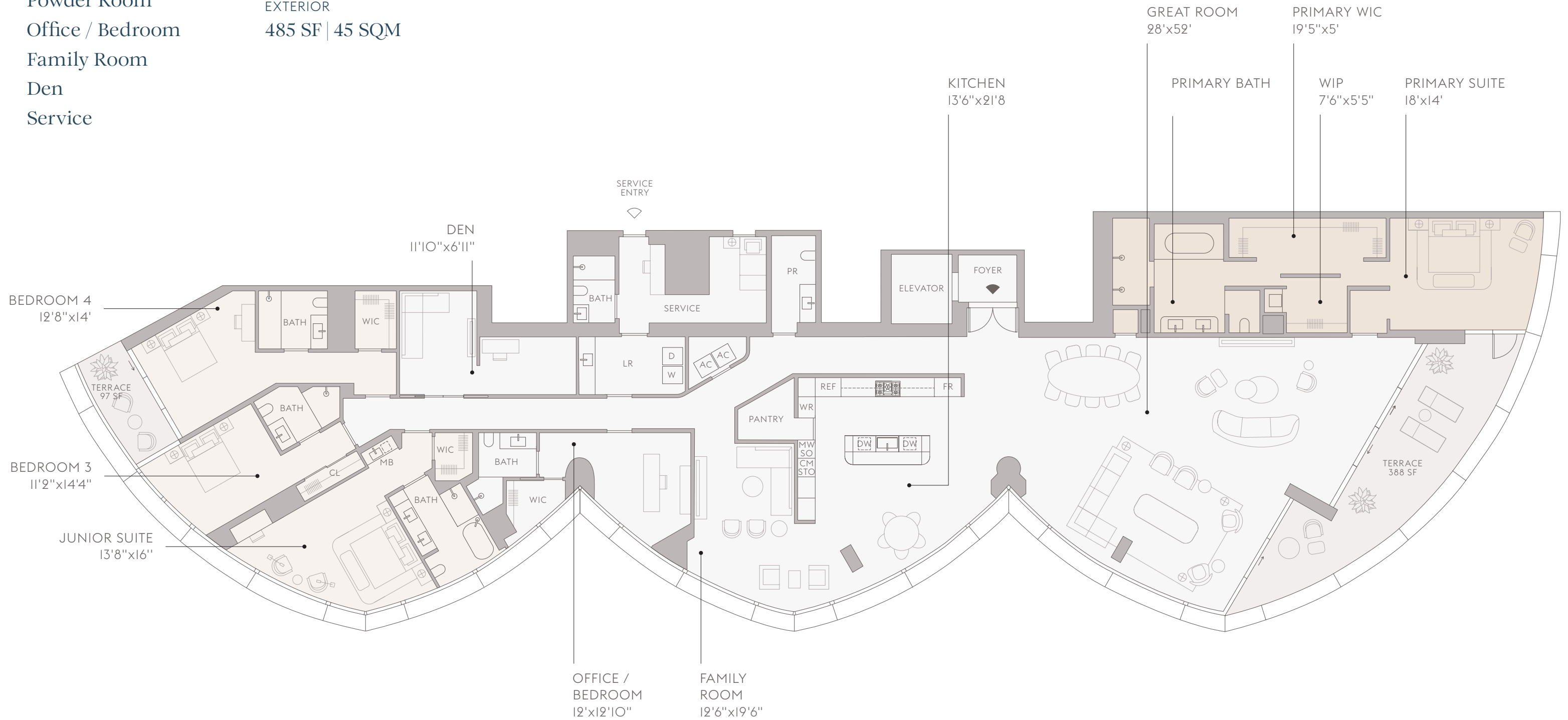
- **FBW** Surface mounted LED downlight with nominal 8" diameter housing.
- ★ **FBJ** (2) Rows of surface mounted continuous flexible linear LED cove uplight with side bend, and remote dimming driver.
- ▲ **FBK** Surface mounted continuous linear LED striplight with remote dimming driver.



The dimensions stated for any depicted Unit floor plan are approximate because there are various recognized methods for calculating the square footage of a Unit. The square footage stated herein is calculated from the exterior boundaries of the exterior walls to the centerline of interior demising walls without deductions for cutouts, curves, or architectural features. This method typically results in quoted dimensions greater than the dimensions that would be determined by using other accepted methods. The floor plan, Unit layout, locations of windows, doors, closets, plumbing fixtures, mechanical equipment, appliances, structural elements, architectural design elements, and the uses, configurations, and entries to rooms may change based on final approved plans, permitting, and completed construction. The furniture layout and the uses of space illustrated are suggested uses only and not intended to guaranty any specific use of space or accommodation of specific furnishings. Consult the Developer's Prospectus to learn what is included with a Unit purchase and to review the Unit square footage calculation method to be relied upon. 2023© with all rights reserved.

Residence B, Floors 18-21

4 Bedrooms	INTERIOR	TOTAL
6 Bathrooms	5,810 SF 540 SQM	6,295 SF 585 SQM
Powder Room	EXTERIOR	
Office / Bedroom	485 SF 45 SQM	
Family Room		
Den		
Service		



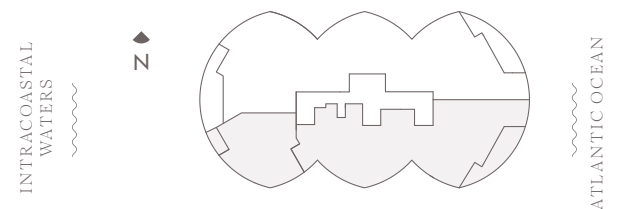
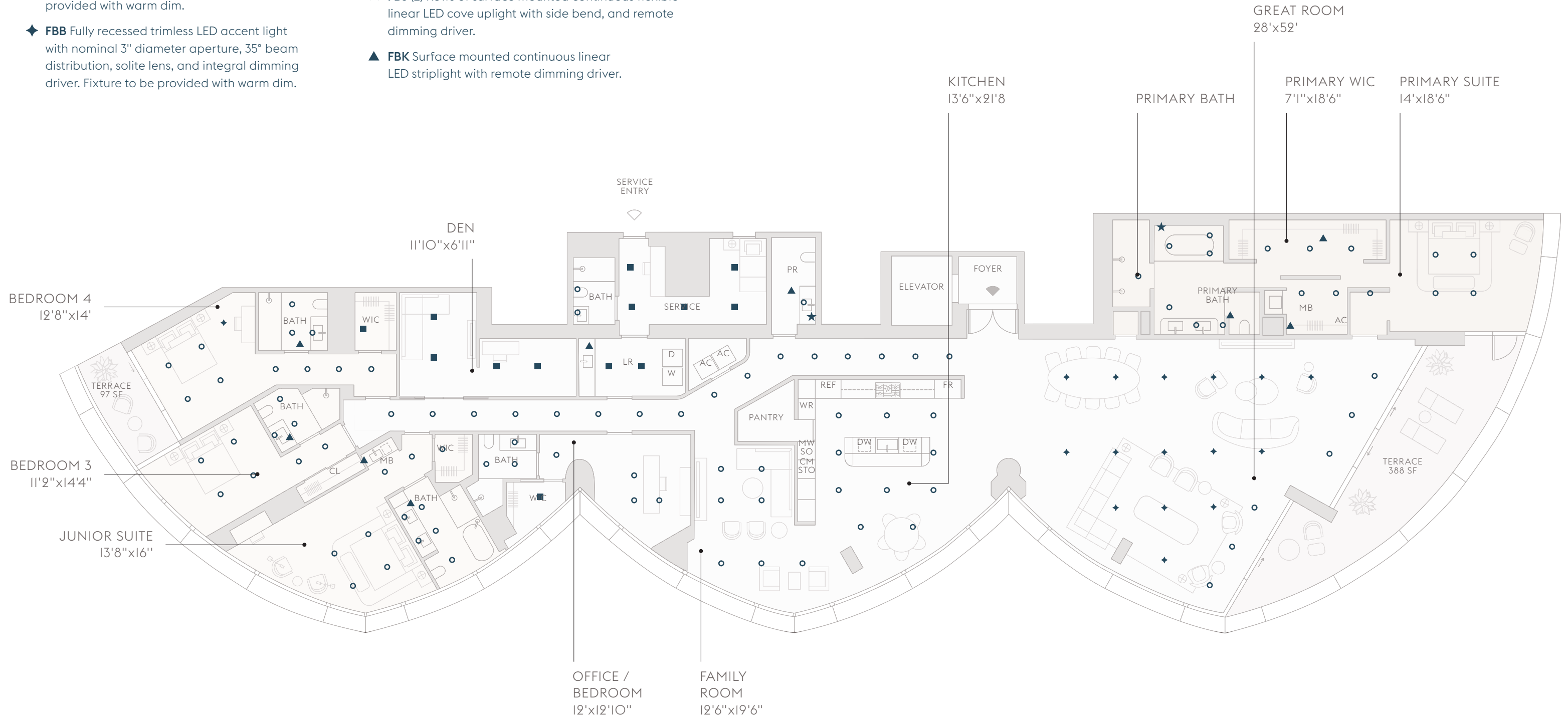
The dimensions stated for any depicted Unit floor plan are approximate because there are various recognized methods for calculating the square footage of a Unit. The square footage stated herein is calculated from the exterior boundaries of the exterior walls to the centerline of interior demising walls without deductions for cutouts, curves, or architectural features. This method typically results in quoted dimensions greater than the dimensions that would be determined by using other accepted methods. The floor plan, Unit layout, locations of windows, doors, closets, plumbing fixtures, mechanical equipment, appliances, structural elements, architectural design elements, and the uses, configurations, and entries to rooms may change based on final approved plans, permitting, and completed construction. The furniture layout and the uses of space illustrated are suggested uses only and not intended to guaranty any specific use of space or accommodation of specific furnishings. Consult the Developer's Prospectus to learn what is included with a Unit purchase and to review the Unit square footage calculation method to be relied upon. 2023© with all rights reserved.

Residence B, Floors 18–21

Ceiling Plan

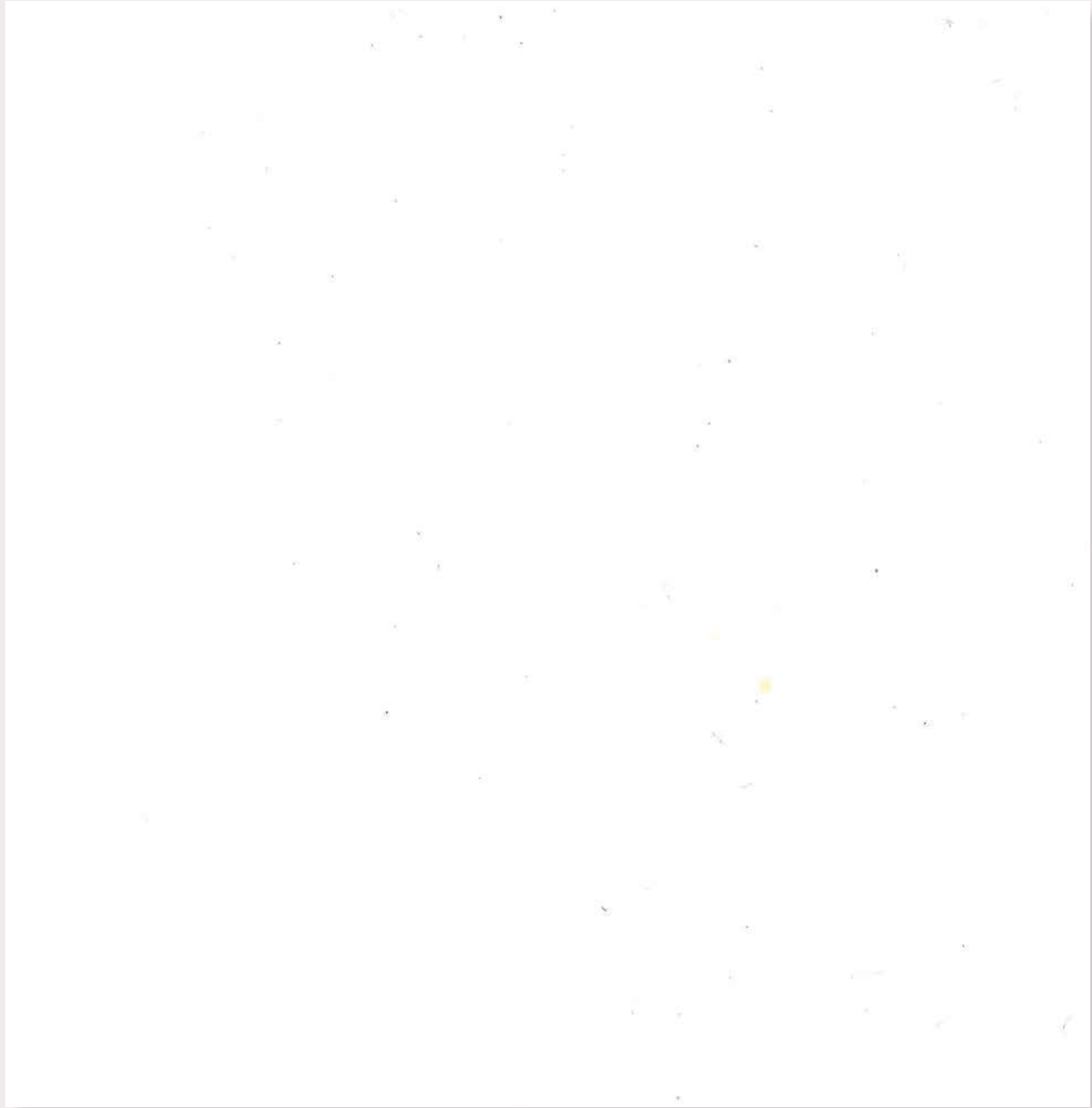
- **FBA** Fully recessed trimless LED downlight with nominal 3" diameter aperture, 55° beam distribution, solite lens, and integral driver. Fixture to be provided with warm dim.
- ◆ **FBB** Fully recessed trimless LED accent light with nominal 3" diameter aperture, 35° beam distribution, solite lens, and integral dimming driver. Fixture to be provided with warm dim.

- **FBW** Surface mounted LED downlight with nominal 8" diameter housing.
- ★ **FBJ (2)** Rows of surface mounted continuous flexible linear LED cove uplight with side bend, and remote dimming driver.
- ▲ **FBK** Surface mounted continuous linear LED striplight with remote dimming driver.



The dimensions stated for any depicted Unit floor plan are approximate because there are various recognized methods for calculating the square footage of a Unit. The square footage stated herein is calculated from the exterior boundaries of the exterior walls to the centerline of interior demising walls without deductions for cutouts, curves, or architectural features. This method typically results in quoted dimensions greater than the dimensions that would be determined by using other accepted methods. The floor plan, Unit layout, locations of windows, doors, closets, plumbing fixtures, mechanical equipment, appliances, structural elements, architectural design elements, and the uses, configurations, and entries to rooms may change based on final approved plans, permitting, and completed construction. The furniture layout and the uses of space illustrated are suggested uses only and not intended to guaranty any specific use of space or accommodation of specific furnishings. Consult the Developer's Prospectus to learn what is included with a Unit purchase and to review the Unit square footage calculation method to be relied upon. 2023© with all rights reserved.

Residence Flooring Options



24"x48" SNOW WHITE DOLOMITTI



12"x24" WIDE-PLANK EUROPEAN WHITE OAK

Air Palette—Option for Kitchen



O1.



O2.



O3.



O5.



O4.

O1. WHITE OAK CABINERY, O2. BIANCO ECRU MARBLE SLAB COUNTERS & BACKSPLASH, O3. WHITE LACQUERED PANEL ISLAND, O4. PLATINUM METAL FINISH FIXTURES, O5. PLATINUM FINISH DORNBRACHT FAUCET





Earth Palette—Option for Kitchen



O1.



O2.



O3.



O5.



O4.

O1. DARK WALNUT CABINERY, O2. WHITE CALACATTA MARBLE SLAB COUNTERS & BACKSPLASH, O3. WHITE LACQUERED PANEL ISLAND, O4. PLATINUM METAL FINISH FIXTURES, O5. PLATINUM FINISH DORNBRACHT FAUCET







Residence C, Floor 2

3 Bedrooms

3 Bathrooms

Powder Room

INTERIOR
3,284 SF | 305 SQM

EXTERIOR
585 SF | 54 SQM

TOTAL
3,869 SF | 359 SQM

BEDROOM 2
11'3"x14'6"

DINING ROOM
12'x18'

LIVING ROOM
21'x22'

KITCHEN
19'6"x11'8"

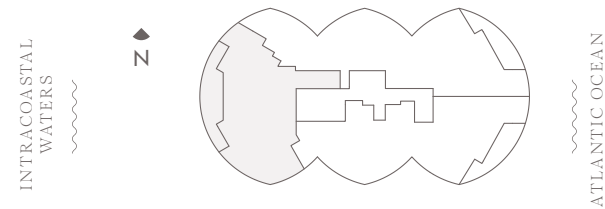
BEDROOM 3
10'x15'6"

PRIMARY WIC
12'6"x9'4"

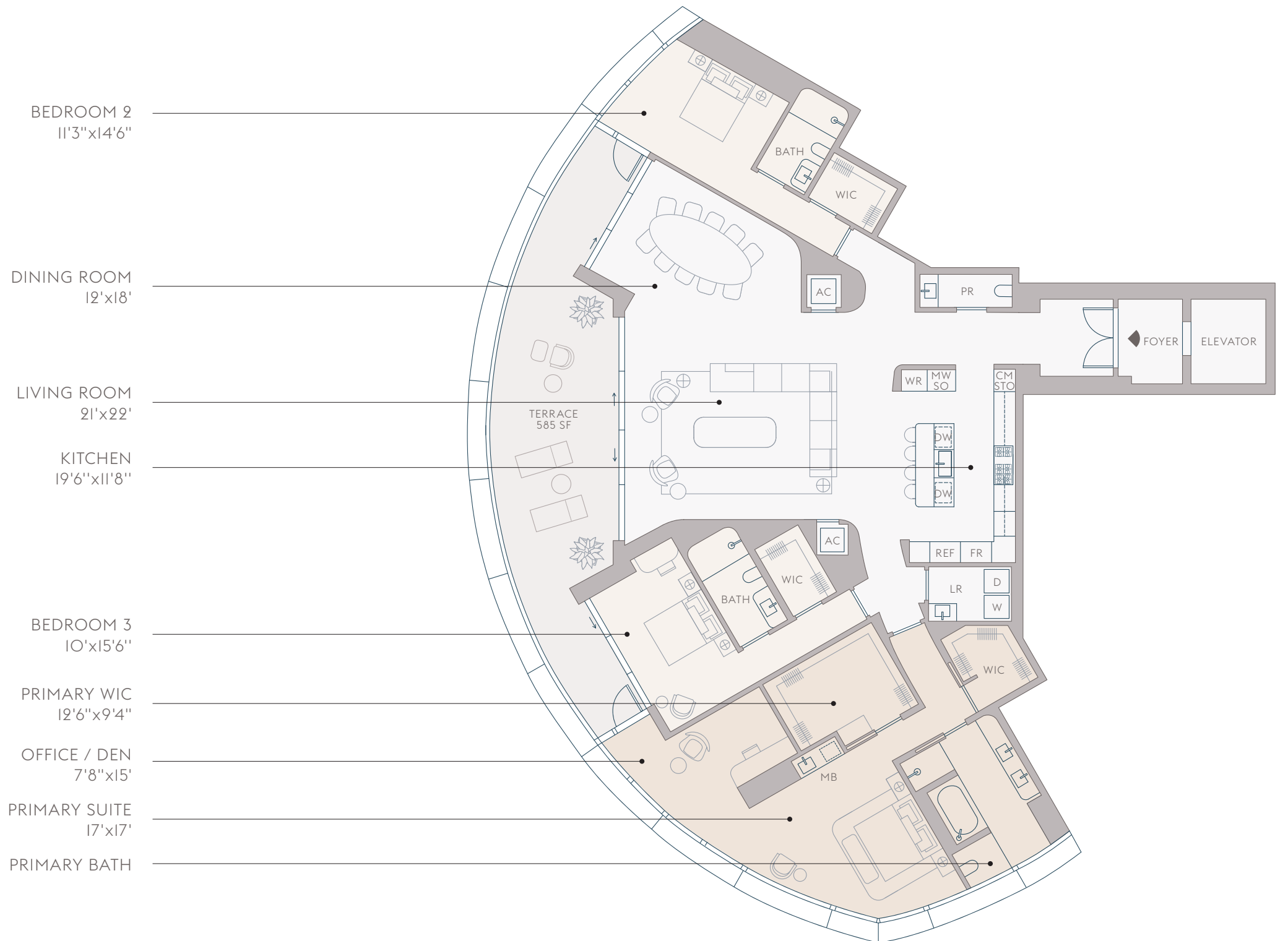
OFFICE / DEN
7'8"x15'

PRIMARY SUITE
17'x17'

PRIMARY BATH



The dimensions stated for any depicted Unit floor plan are approximate because there are various recognized methods for calculating the square footage of a Unit. The square footage stated herein is calculated from the exterior boundaries of the exterior walls to the centerline of interior demising walls without deductions for cutouts, curves, or architectural features. This method typically results in quoted dimensions greater than the dimensions that would be determined by using other accepted methods. The floor plan, Unit layout, locations of windows, doors, closets, plumbing fixtures, mechanical equipment, appliances, structural elements, architectural design elements, and the uses, configurations, and entries to rooms may change based on final approved plans, permitting, and completed construction. The furniture layout and the uses of space illustrated are suggested uses only and not intended to guaranty any specific use of space or accommodation of specific furnishings. Consult the Developer's Prospectus to learn what is included with a Unit purchase and to review the Unit square footage calculation method to be relied upon. 2023© with all rights reserved.



Residence C, Floor 2 Ceiling Plan

- **FBA** Fully recessed trimless LED downlight with nominal 3" diameter aperture, 55° beam distribution, solite lens, and integral driver. Fixture to be provided with warm dim.
- ◆ **FBB** Fully recessed trimless LED accent light with nominal 3" diameter aperture, 35° beam distribution, solite lens, and integral dimming driver. Fixture to be provided with warm dim.
- **FBW** Surface-mounted LED downlight with nominal 8" diameter housing.
- ★ **FBJ (2)** Rows of surface-mounted continuous flexible linear LED cove uplight with side bend and remote dimming driver.
- ▲ **FBK** Surface-mounted continuous linear LED striplight with remote dimming driver.

BEDROOM 2
11'3"x14'6"

DINING ROOM
12'x18'

LIVING ROOM
21'x22'

KITCHEN
19'6"x11'8"

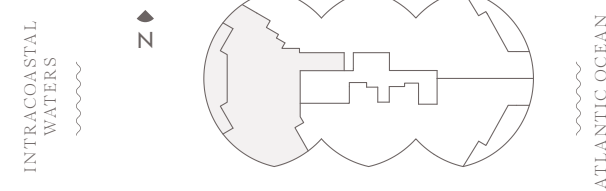
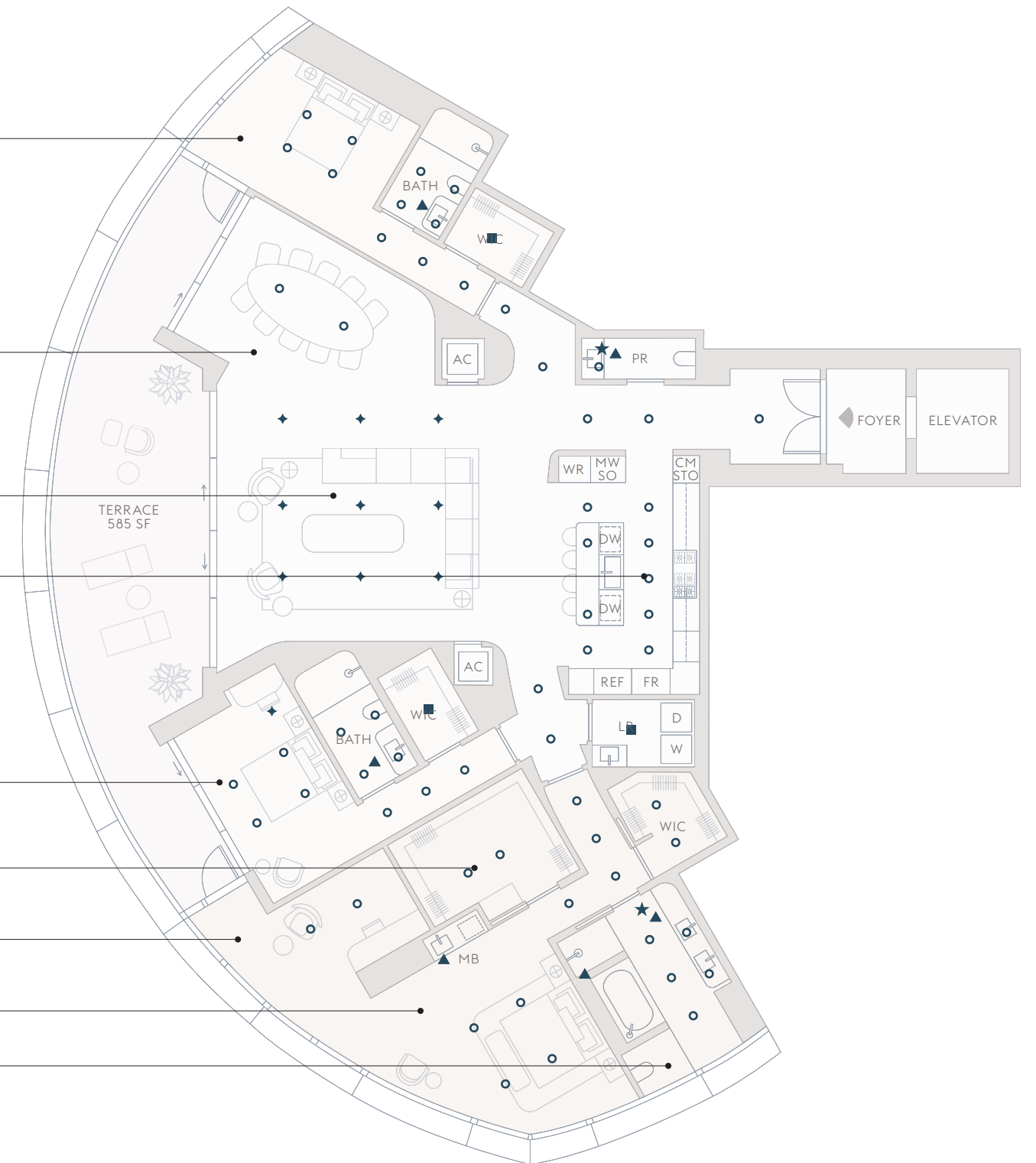
BEDROOM 3
10'x15'6"

PRIMARY WIC
12'6"x9'4"

OFFICE / DEN
7'8"x15'

PRIMARY SUITE
17'x17'

PRIMARY BATH



The dimensions stated for any depicted Unit floor plan are approximate because there are various recognized methods for calculating the square footage of a Unit. The square footage stated herein is calculated from the exterior boundaries of the exterior walls to the centerline of interior demising walls without deductions for cutouts, curves, or architectural features. This method typically results in quoted dimensions greater than the dimensions that would be determined by using other accepted methods. The floor plan, Unit layout, locations of windows, doors, closets, plumbing fixtures, mechanical equipment, appliances, structural elements, architectural design elements, and the uses, configurations, and entries to rooms may change based on final approved plans, permitting, and completed construction. The furniture layout and the uses of space illustrated are suggested uses only and not intended to guaranty any specific use of space or accommodation of specific furnishings. Consult the Developer's Prospectus to learn what is included with a Unit purchase and to review the Unit square footage calculation method to be relied upon. 2023© with all rights reserved.

Residence C, Floors 3-17

3 Bedrooms

3 Bathrooms

Powder Room

INTERIOR
3,297 SF | 306 SQM

EXTERIOR
585 SF | 54 SQM

TOTAL
3,882 SF | 361 SQM

BEDROOM 2
11'3"x14'6"

DINING ROOM
12'x18'

LIVING ROOM
21'x22'

KITCHEN
19'6"x11'8"

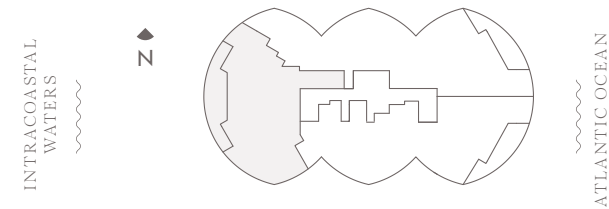
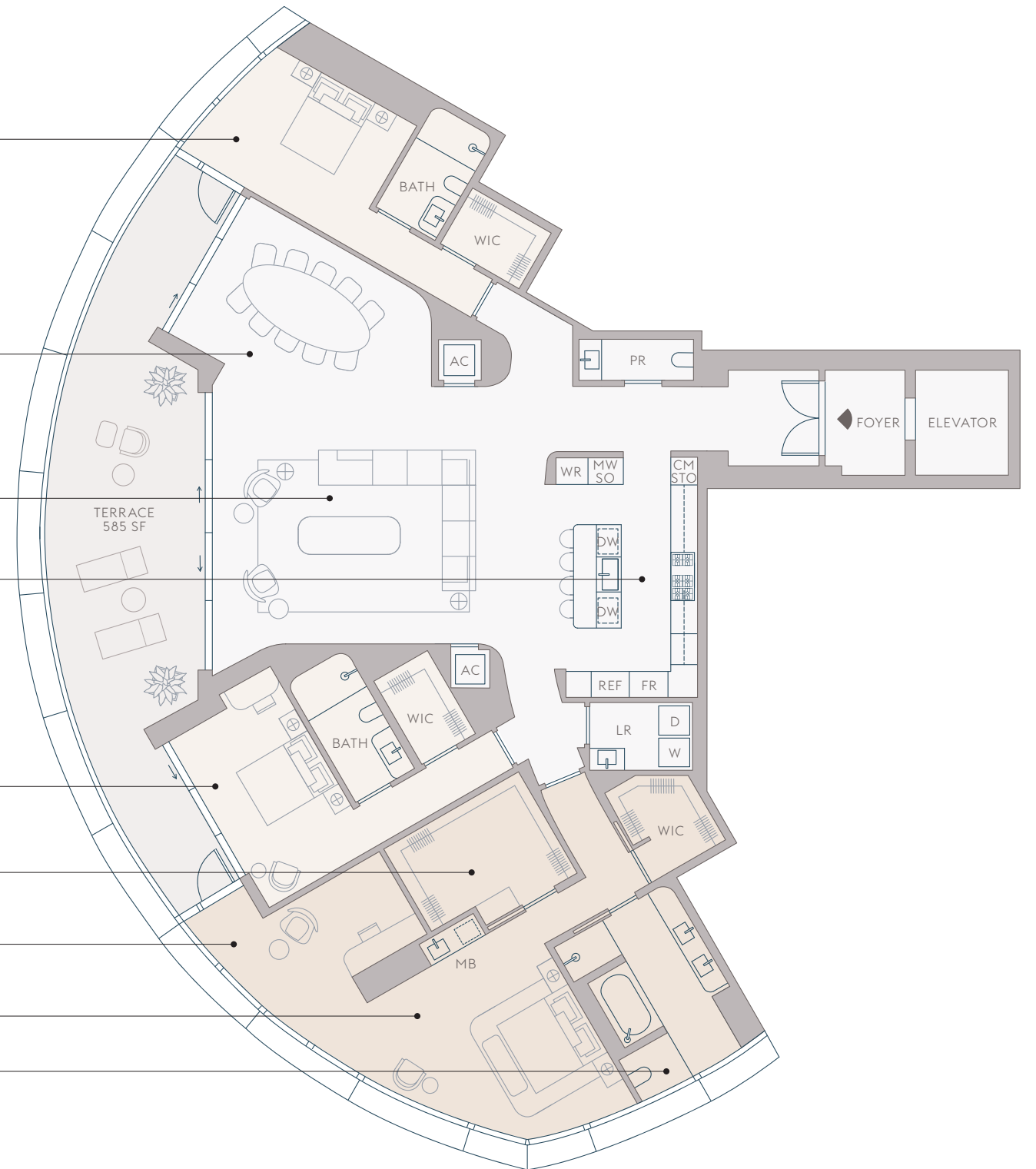
BEDROOM 3
10'x15'6"

PRIMARY WIC
12'6"x9'4"

OFFICE / DEN
7'8"x15'

PRIMARY SUITE
17'x17'

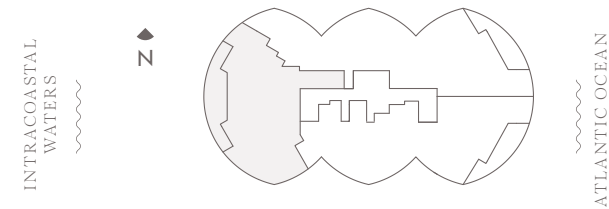
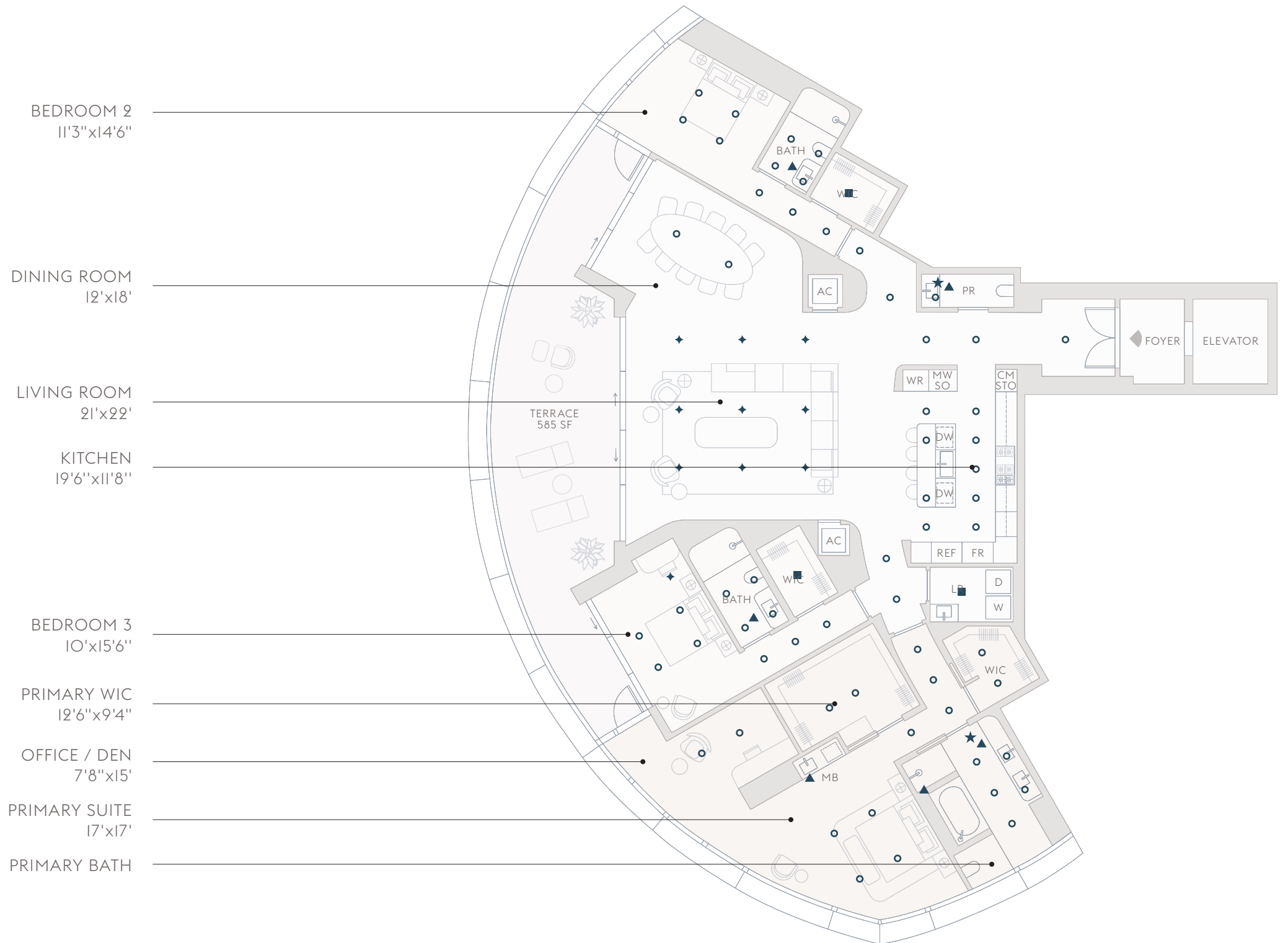
PRIMARY BATH



The dimensions stated for any depicted Unit floor plan are approximate because there are various recognized methods for calculating the square footage of a Unit. The square footage stated herein is calculated from the exterior boundaries of the exterior walls to the centerline of interior demising walls without deductions for cutouts, curves, or architectural features. This method typically results in quoted dimensions greater than the dimensions that would be determined by using other accepted methods. The floor plan, Unit layout, locations of windows, doors, closets, plumbing fixtures, mechanical equipment, appliances, structural elements, architectural design elements, and the uses, configurations, and entries to rooms may change based on final approved plans, permitting, and completed construction. The furniture layout and the uses of space illustrated are suggested uses only and not intended to guaranty any specific use of space or accommodation of specific furnishings. Consult the Developer's Prospectus to learn what is included with a Unit purchase and to review the Unit square footage calculation method to be relied upon. 2023© with all rights reserved.

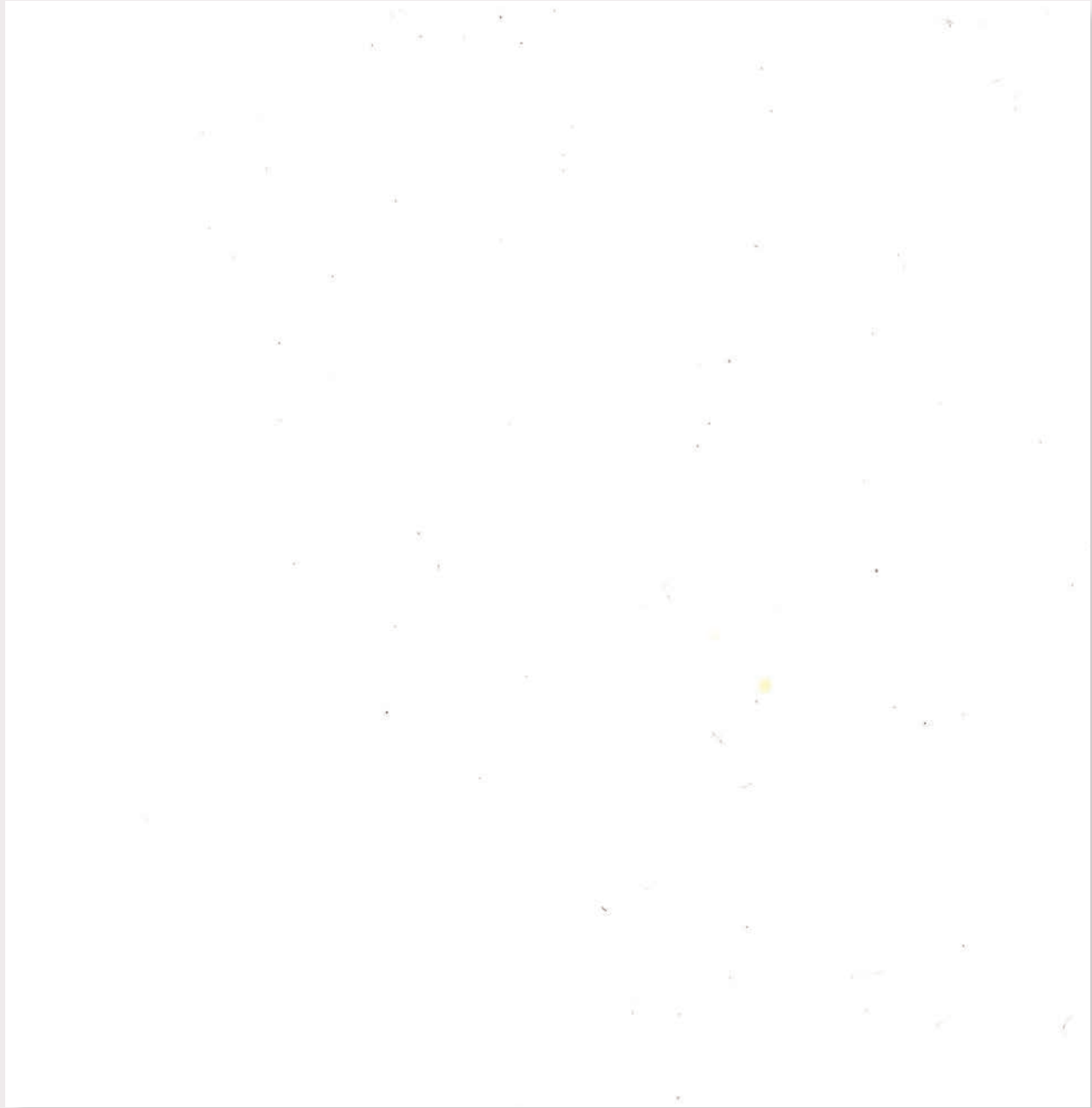
Residence C, Floors 3–17 Ceiling Plan

- **FBA** Fully recessed trimless LED downlight with nominal 3" diameter aperture, 55° beam distribution, solite lens, and integral driver. Fixture to be provided with warm dim.
- ◆ **FBB** Fully recessed trimless LED accent light with nominal 3" diameter aperture, 35° beam distribution, solite lens, and integral dimming driver. Fixture to be provided with warm dim.
- **FBW** Surface-mounted LED downlight with nominal 8" diameter housing.
- ★ **FBJ** (2) Rows of surface-mounted continuous flexible linear LED cove uplight with side bend and remote dimming driver.
- ▲ **FBK** Surface-mounted continuous linear LED striplight with remote dimming driver.



The dimensions stated for any depicted Unit floor plan are approximate because there are various recognized methods for calculating the square footage of a Unit. The square footage stated herein is calculated from the exterior boundaries of the exterior walls to the centerline of interior demising walls without deductions for cutouts, curves, or architectural features. This method typically results in quoted dimensions greater than the dimensions that would be determined by using other accepted methods. The floor plan, Unit layout, locations of windows, doors, closets, plumbing fixtures, mechanical equipment, appliances, structural elements, architectural design elements, and the uses, configurations, and entries to rooms may change based on final approved plans, permitting, and completed construction. The furniture layout and the uses of space illustrated are suggested uses only and not intended to guaranty any specific use of space or accommodation of specific furnishings. Consult the Developer's Prospectus to learn what is included with a Unit purchase and to review the Unit square footage calculation method to be relied upon. 2023© with all rights reserved.

Residence Flooring Options



24"x48" SNOW WHITE DOLOMITTI



12"x24" WIDE-PLANK EUROPEAN WHITE OAK

Air Palette—Option for Kitchen



O1.



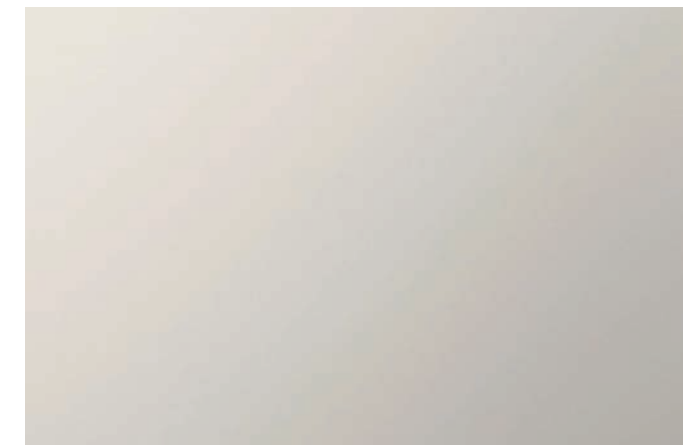
O2.



O3.



O5.



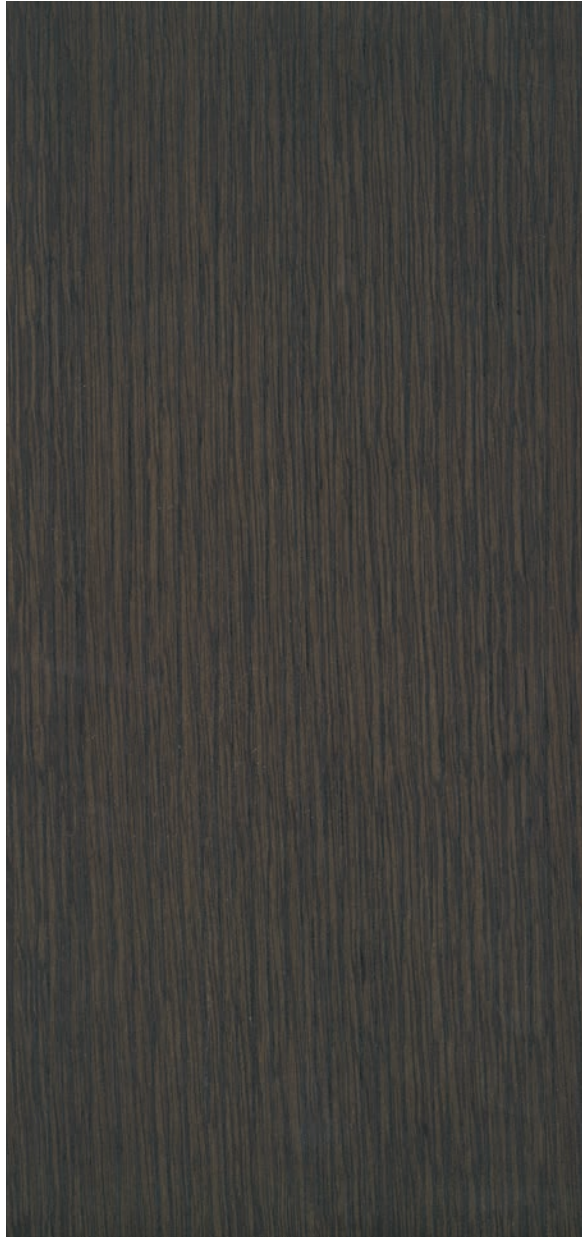
O4.

O1. WHITE OAK CABINETS, O2. BIANCO ECRU MARBLE SLAB COUNTERTOPS & BACKSPLASH, O3. WHITE LACQUERED PANEL ISLAND, O4. PLATINUM METAL FINISH FIXTURES, O5. PLATINUM FINISH DORNBRACHT FAUCET





Earth Palette—Option for Kitchen



O1.



O2.



O3.



O5.



O4.

O1. DARK WALNUT CABINETRY, O2. WHITE CALACATTA MARBLE SLAB COUNTERS & BACKSPLASH, O3. WHITE LACQUERED PANEL ISLAND, O4. PLATINUM METAL FINISH FIXTURES, O5. PLATINUM FINISH DORNBRACHT FAUCET

Residence C

KITCHEN IN EARTH PALETTE WITH STONE FLOORING





Air Palette—Option for Primary Bathroom



01.



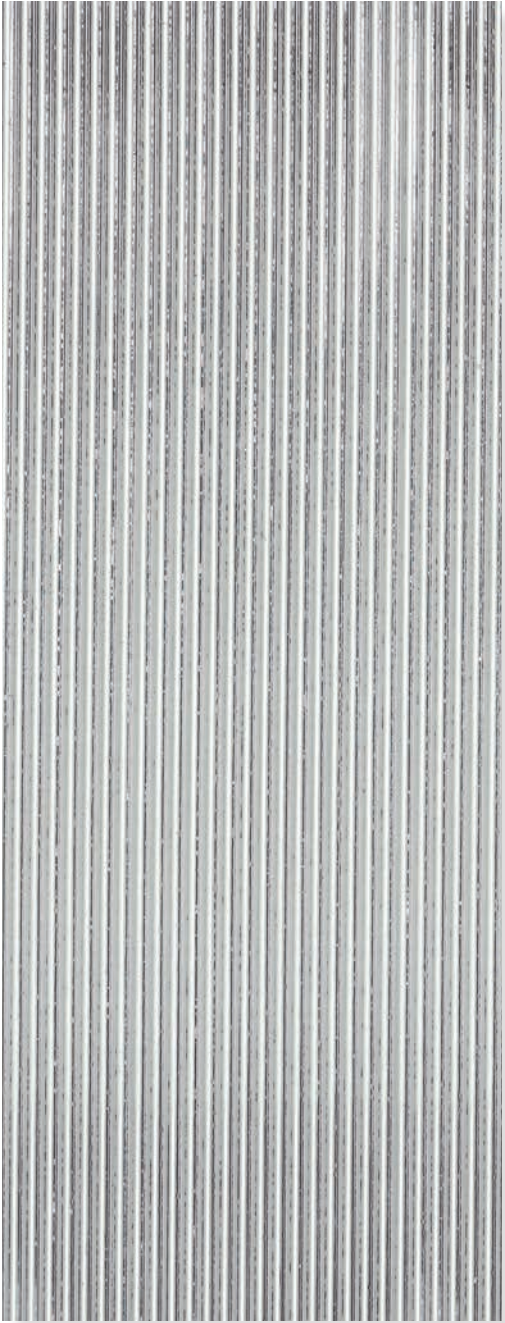
04.



02.



03.



05.



06.

01. TRAVERTINE FLOOR TILES AND WALLS, 02. WHITE LACQUERED PANEL VANITY, 03. WHITE VOLAKAS MARBLE SLAB COUNTERS & BACKSPLASH, 04. BRUSHED CHAMPAGNE METAL FINISH FIXTURES, 05. FLUTED GLASS SHOWER, 06. APPARATUS WALL SCONCE

Primary Bathroom

SHOWN IN AIR PALETTE



Primary Bathroom



Earth Palette—Option for Primary Bathroom



01.



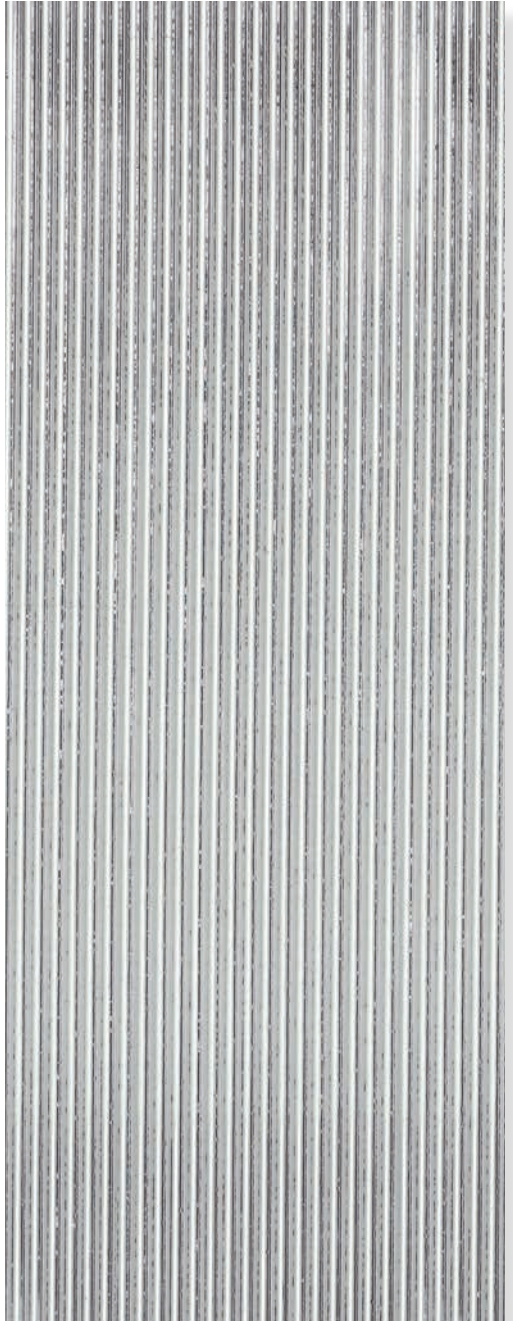
04.



02.



03.



05.



06.

01. TRAVERTINE FLOOR TILES AND WALLS, 02. DARK WALNUT PANEL VANITY, 03. WHITE VOLAKAS MARBLE SLAB COUNTERS & BACKSPLASH, 04. BRUSHED CHAMPAGNE METAL FINISH FIXTURES, 05. FLUTED GLASS SHOWER, 06. APPARATUS WALL SCONCE

Primary Bathroom

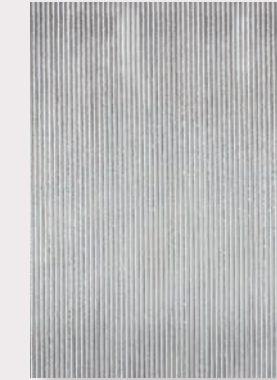
SHOWN IN EARTH PALETTE



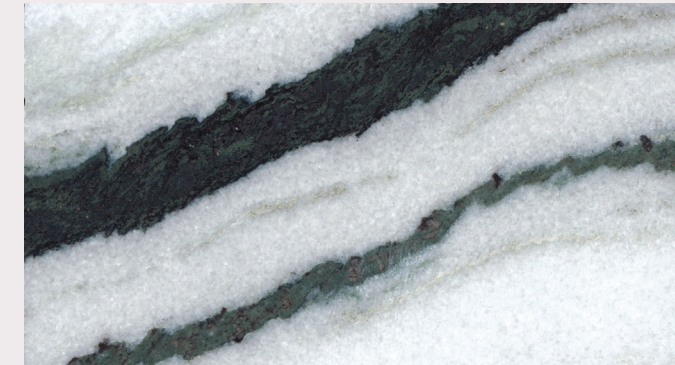
Secondary Bathroom



O1.



O6.



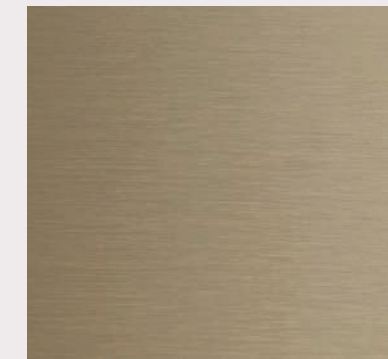
O3.



O5.



O2.



O4.

MATERIALS & FINISHES

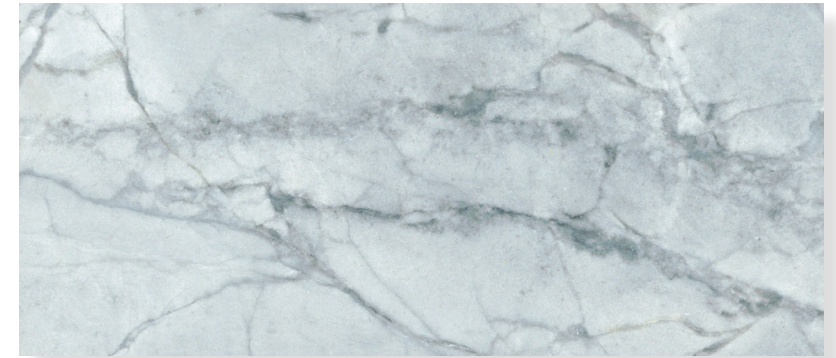
O1. BIANCO DOLOMITTI TILE FLOORING & WALLS, O2. WHITE OAK CABINetry, O3. PANDA WHITE MARBLE SLAB VANITY, O4. BRUSHED CHAMPAGNE METAL FINISH FIXTURES, O5. HOLLY HUNT WALL SCONCE, O6. FLUTED GLASS SHOWER



O1.



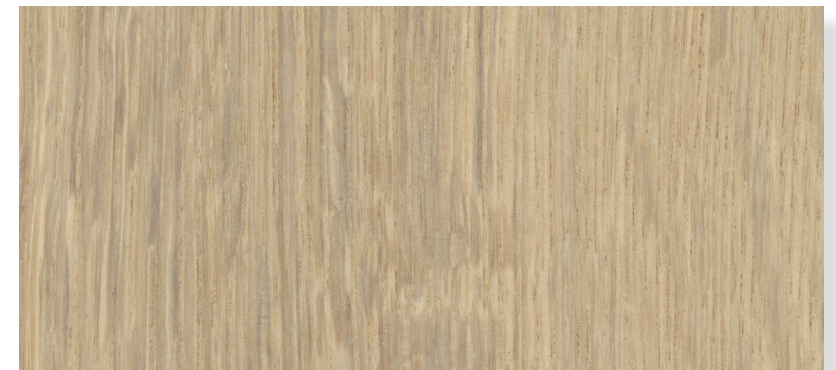
O4.



O2.



O5.



O3.

Powder Room

O1. GRAY GRASS-CLOTH WALL COVERING, O2. SUPER WHITE MARBLE SLAB VANITY, O3. WIDE-PLANK EUROPEAN WHITE OAK FLOORS, O4. BRUSHED CHAMPAGNE METAL FINISH FIXTURES, O5. APPARATUS WALL SCONCE



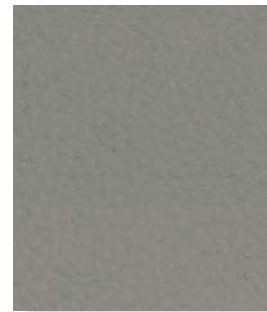
Wardrobe



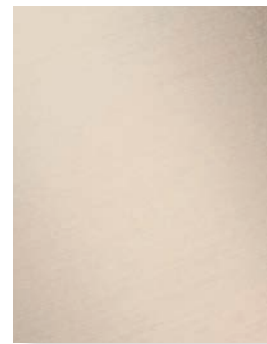
03.



07.



06.



04.



01.



02.



05.

AIR PALETTE

01. WIDE-PLANK EUROPEAN WHITE OAK FLOORS, 02. WHITE OAK CABINETY, 03. ARABESCATO CORCHIA COUNTERTOPS, 04. BRUSHED CHAMPAGNE METAL FINISH FIXTURES, 05. JOSEPH GILES HOLMES PULLS, 06. LEATHER-LINED DRAWERS, 07. FLUTED GLASS

BASE PACKAGE: ALL WOOD FINISHES, NO DOORS, MARBLE COUNTERTOP ONLY

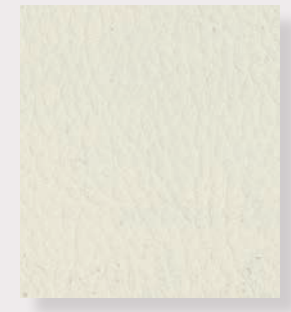
UPGRADED PACKAGE: LEATHER-WRAPPED DRAWERS, DOORS AND BACK PANEL, FLUTED GLASS DOORS, MARBLE COUNTERTOP AND ACCENT WALL



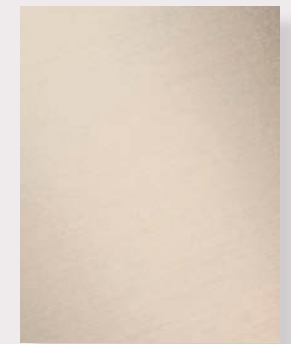
03.



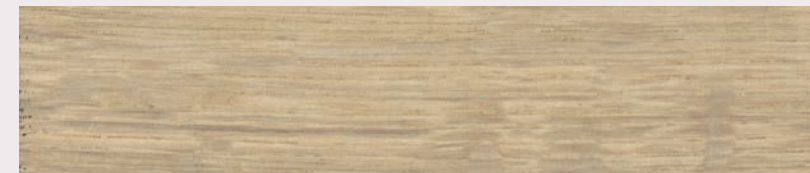
07.



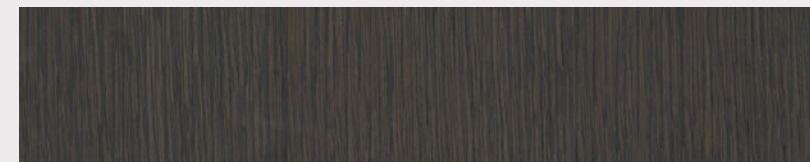
06.



04.



01.



02.



05.

EARTH PALETTE

01. WIDE-PLANK EUROPEAN WHITE OAK FLOORS, 02. WALNUT CABINETY, 03. ARABESCATO CORCHIA COUNTERTOPS, 04. BRUSHED CHAMPAGNE METAL FINISH FIXTURES, 05. JOSEPH GILES HOLMES PULLS, 06. LEATHER-LINED DRAWERS, 07. FLUTED GLASS

BASE PACKAGE: ALL WOOD FINISHES, NO DOORS, MARBLE COUNTERTOP ONLY

UPGRADED PACKAGE: LEATHER-WRAPPED DRAWERS, DOORS AND BACK PANEL, FLUTED GLASS DOORS, MARBLE COUNTERTOP AND ACCENT WALL

Wardrobe

UPGRADED PACKAGE SHOWN IN AIR PALETTE



Wardrobe

UPGRADED PACKAGE SHOWN IN AIR PALETTE



Wardrobe

UPGRADED PACKAGE SHOWN IN EARTH PALETTE



Wardrobe

UPGRADED PACKAGE SHOWN IN EARTH PALETTE



Midnight Bar



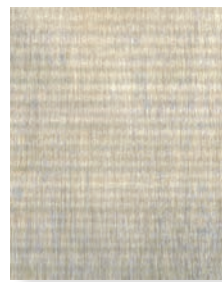
01.



02.



03.



04.



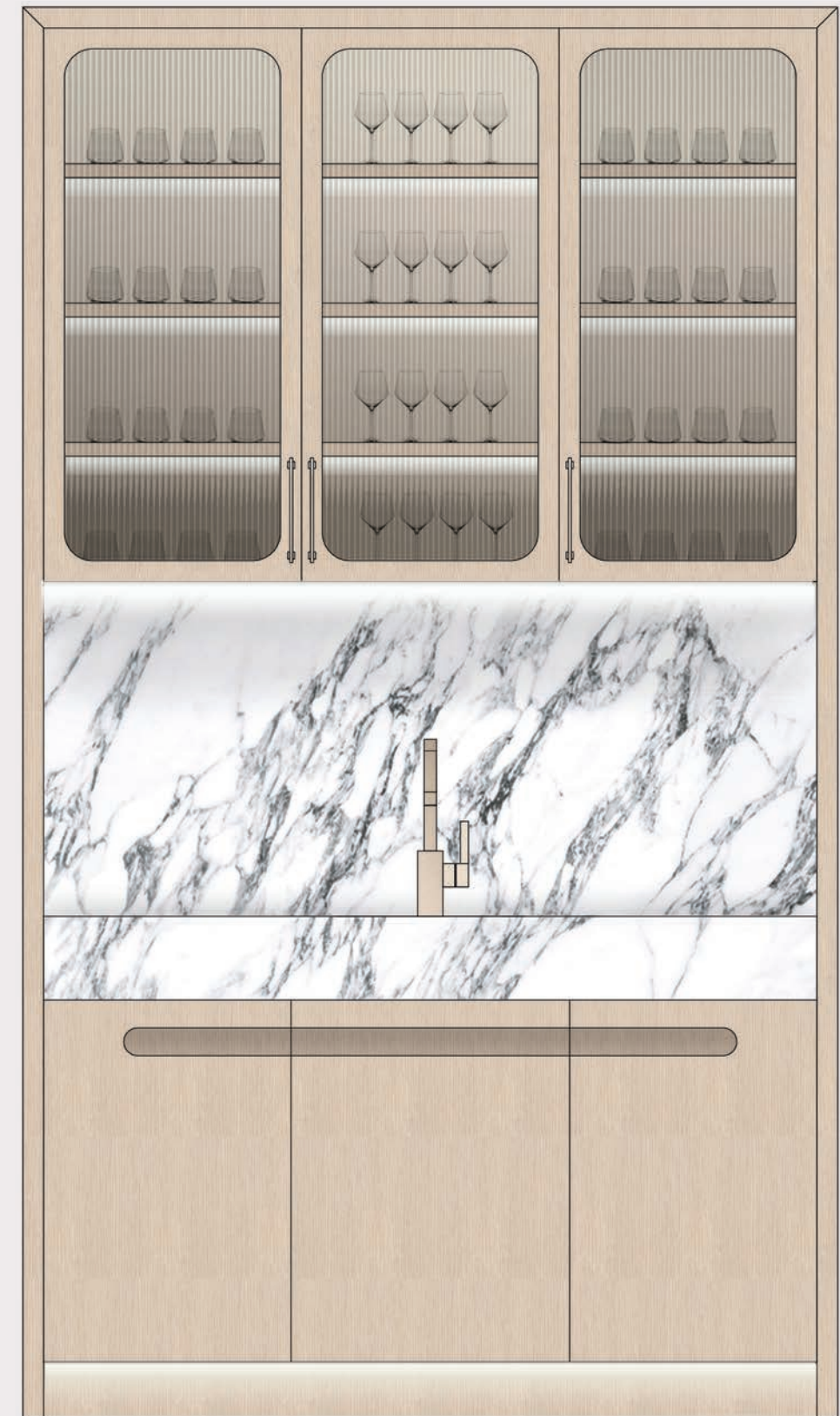
05.

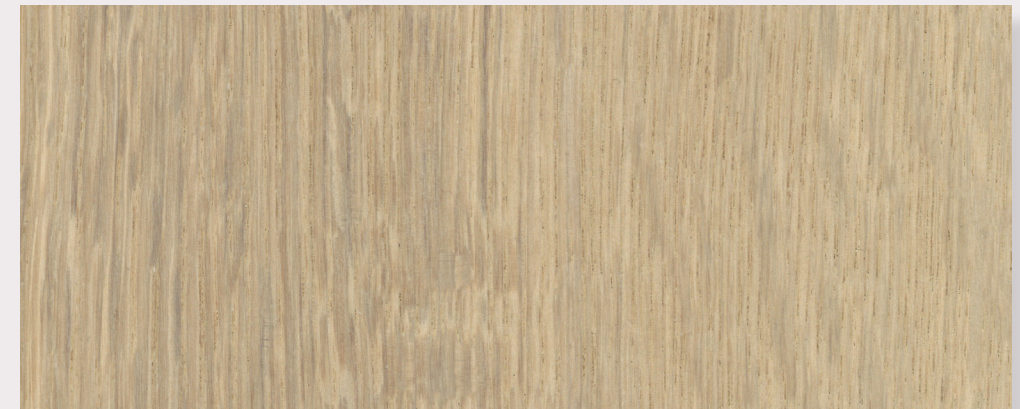
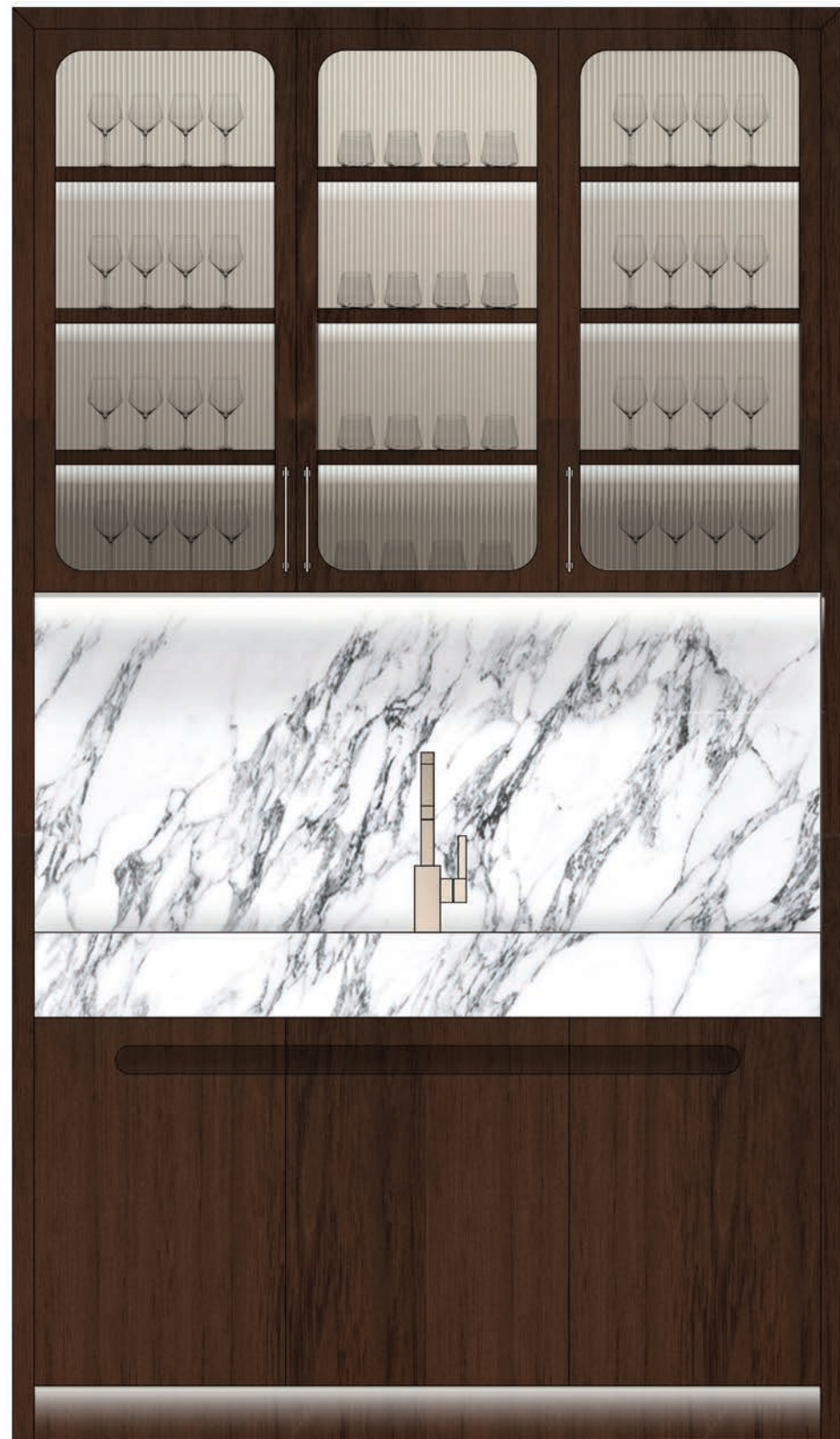


06.

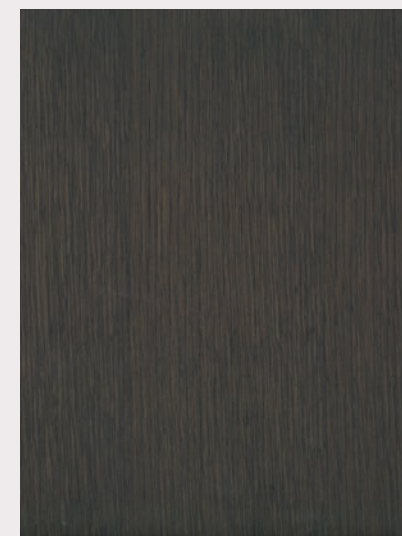
AIR PALETTE

01. WIDE-PLANK EUROPEAN WHITE OAK FLOORS, 02. WHITE OAK CABINETS, 03. ARABESCATO CORCHIA COUNTERTOPS, 04. BRUSHED CHAMPAGNE METAL FINISH FIXTURES, 05. FLUTED GLASS, 06. JOSEPH GILES HOLMES PULLS





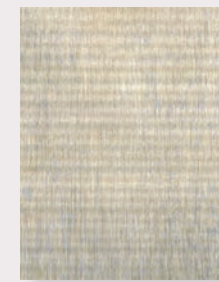
O1.



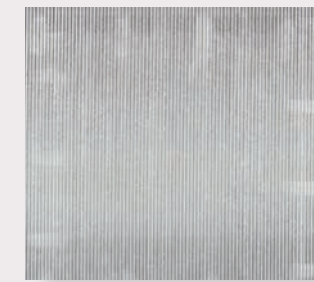
O2.



O3.



O4.



O5.



O6.

EARTH PALETTE

O1. WIDE-PLANK EUROPEAN WHITE OAK FLOORS, O2. WALNUT CABINTRY, O3. ARABESCATO CORCHIA COUNTERTOPS, O4. BRUSHED CHAMPAGNE METAL FINISH FIXTURES, O5. FLUTED GLASS, O6. JOSEPH GILES HOLMES PULLS

KITCHEN

EQUIPMENT & FITTINGS



SUB-ZERO / WOLF
30" M SERIES CONTEMPORARY
SPEED OVEN



SUB-ZERO / COVE
24" DISHWASHER WITH
WATER SOFTENER — PANEL READY



DORNBRACHT
SINGLE PULL LEVER FAUCET
WITH PULL DOWN SPRAY



SUB-ZERO / WOLF
30" M SERIES CONTEMPORARY
DROP-DOWN DOOR MICROWAVE OVEN



48" SUB-ZERO / WOLF
DUAL FUEL RANGE
(TYPE C)



STAINLESS STEEL KITCHEN SINK
IN SATIN FINISH



SUB-ZERO / WOLF
30" M SERIES CONTEMPORARY
COFFEE SYSTEM



38" SUB-ZERO / WOLF
DUAL FUEL RANGE
(TYPES A AND B)



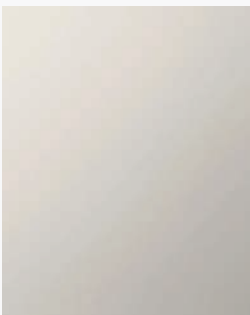
SUB-ZERO / WOLF
36" DESIGNER COLUMN
REFRIGERATOR — PANEL READY



SUB-ZERO / WOLF
36" DESIGNER COLUMN
FREEZER WITH ICE MAKER —
PANEL READY



SUB-ZERO / WOLF
30" DESIGNER WINE STORAGE —
PANEL READY



FINISH: DORNBRACHT
PLATINUM METAL



SUB-ZERO / WOLF
30" M SERIES CONTEMPORARY
GLASS CONVECTION STEAM OVEN
WITH RETRACTABLE HANDLE

STONE INDEX



BIANCO ECRU
KITCHEN



WHITE CALACATTA
KITCHEN



WHITE VOLAKAS
PRIMARY BATHROOM



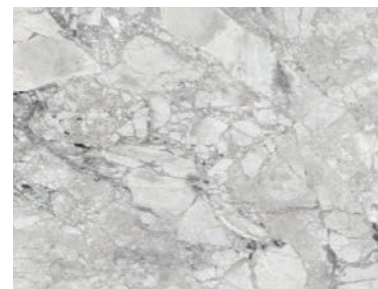
BIANCO SANTA CATERINA
TRAVERTINE HONED & FILLED
PRIMARY BATHROOM



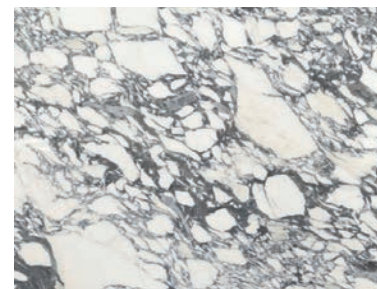
PANDA MARBLE HONED
SECONDARY BATHROOM



SNOW WHITE DOLOMITTI HONED
SECONDARY BATHROOM



SUPER WHITE HONED
POWDER ROOM



ARABESCATO CORCHIA HONED
WARDROBES & MIDNIGHT BAR

PRIMARY BATHROOM

FIXTURE & HARDWARE SELECTIONS



STEAM SHOWER WITH
WALL JETS



DORNBRACHT MEM
HAND SHOWER SET



TOTO WASHLET
SMART TOILET



DORNBRACHT MEM
TOILET ROLL HOLDER



DORNBRACHT WALL-MOUNTED
LAVATORY MIXER



DORNBRACHT MEM
TOWEL BAR



DORNBRACHT MEM
TUB FILLER



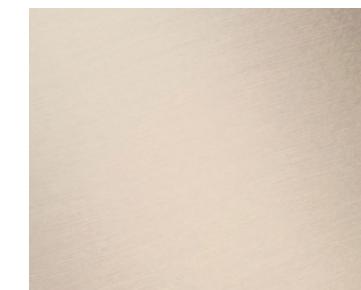
DORNBRACHT MEM
THERMOSTAT MODULE



DORNBRACHT
RAIN PANEL



DORNBRACHT MEM
ROBE HOOK



FINISH: BRUSHED CHAMPAGNE

SECONDARY BATHROOM

FIXTURE & HARDWARE SELECTIONS



DORNBRACHT TARA
RAIN SHOWER



DORNBRACHT TARA
TOWEL BAR



TOTO FLOOR
MOUNTED TOILET



DORNBRACHT
HAND SHOWER SET



DORNBRACHT TARA
WALL-MOUNTED LAVATORY
MIXER



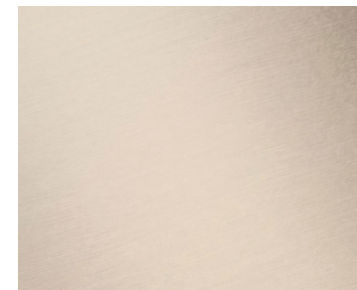
DORNBRACHT TARA
ROLL HOLDER



DORNBRACHT
THERMOSTAT MODULE



DORNBRACHT TARA
ROBE HOOK



FINISH: BRUSHED CHAMPAGNE

POWDER ROOM

FIXTURE & HARDWARE SELECTIONS



TOTO FLOOR
MOUNTED TOILET



DORNBRACHT DECK-MOUNTED
LAVATORY MIXER



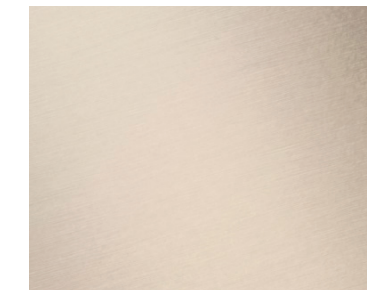
DORNBRACHT MEM
TOILET ROLL HOLDER



DORNBRACHT MEM
ROBE HOOKS



DORNBRACHT MEM
TOWEL BAR



FINISH: BRUSHED CHAMPAGNE

DETAILS ON FIXTURES & FURNISHINGS

Graciously proportioned residence layout by Rottet Studios	Italian flush panel interior doors with concealed hinges
Private elevator foyer with double-door unit entrance	Unit prewired for motorized drapes and smart lighting fixtures (upgrades intended to be offered to purchasers)
Ceiling heights of 10' except in areas with dropped ceilings, soffits, recessed lights and/or other equipment	Rottet Studio custom-designed bathrooms with white lacquered panel vanity, travertine slab walls and travertine floor tiles, marble slab counters and backsplash, brushed champagne metal finish, fluted glass shower and water closets, Dornbracht plumbing fixtures in all bathrooms, and Toto toilets throughout (integrated smart toilets in primary bathrooms)
Rottet Studio custom-designed kitchen cabinets with marble slab counters and backsplash, Dornbracht kitchen in glazed steel, and Sub-Zero / Wolf M Series appliance package	Smart multizone climate-controlled system, with slotted linear diffusers throughout the residences
Glazing system designed by SOM, featuring Schüco lift-and-slide glazing system with 10' opening	Rottet Studio custom-designed base closet system (upgrades intended to be offered to purchasers)
Floor-to-ceiling double-laminated and insulated low-iron glass creates higher energy efficiency and noise reduction windows throughout the residences; glass panels span a width of 5' and a height of 10'	Rottet Studio custom-designed dropped ceiling and lighting plan throughout the residences, with custom-designed shade pockets (upgrades intended to be offered to purchasers)
Stone flooring installed throughout primary living areas, with a purchaser option to change to wood flooring	Service room with en suite 3-piece bathroom
Expansive terraces up to 11' deep with finished flooring	Laundry room with full-sized washer and dryer
Smooth beveled panels for slab-edge coverings	
Frameless glass balcony railings	

The foregoing items are subject to the provisions of Sections 14 and 15 of the Agreement. Additionally, Buyer understands and agrees that at this time, all features, building specs and finishes are proposed only and that in new construction multistory developments, appliances, materials and finishes are not purchased until shortly before completion of the Building. As such, while the described features are representative of the types of items currently contemplated, actual items will only be determined as construction of the project progresses. As such, Buyer authorizes Seller, in its sole discretion: (i) to make changes of suppliers, manufacturers, brand names, or items; and/or (ii) to modify the design concept and/or the list of standard features or make substitutions for equipment, material, appliances, brands, colors, models, etc., with items which in Seller's opinion are of equal or better quality (regardless of cost). THE INFORMATION PROVIDED, INCLUDING SPECIFICATIONS, MODELS AND BRANDS, IS BASED UPON PRELIMINARY DEVELOPMENT PLANS AND IS SOLELY FOR INFORMATIONAL PURPOSES, AND IS SUBJECT TO CHANGE WITHOUT NOTICE. Reference to any upgrades offered may require payment of an additional cost. All measurements are approximate.

RivageBalHarbour.com
786.885.3839

Future residences located at:
10245 Collins Avenue
Bal Harbour, FL 33154



ORAL REPRESENTATIONS CANNOT BE RELIED UPON AS CORRECTLY STATING THE REPRESENTATIONS OF THE DEVELOPER. FOR CORRECT REPRESENTATIONS, MAKE REFERENCE TO THIS BROCHURE AND TO THE DOCUMENTS REQUIRED BY SECTION 718.503, FLORIDA STATUTES, TO BE FURNISHED BY A DEVELOPER TO A BUYER OR LESSEE. THE COMPLETE OFFERING TERMS ARE IN A CPS-12 APPLICATION AVAILABLE FROM THE OFFEROR. FILE NO. CP23-0060

RIVAGE BAL HARBOUR CONDOMINIUM (the "Condominium") is developed by Carlton Terrace Owner LLC ("Developer") and this offering is made only by the Developer's Prospectus for the Condominium. No statement should be relied upon if not made in the Developer's Prospectus. Architectural design elements may vary from concept to actual construction. All depictions of the views, waterfront or water access, finishes, fixtures, design, and amenities are conceptual. The furnishings, décor, and interior design depicted are conceptual and not included in the Unit purchase. Sketches, renderings, or photographs depicting lifestyle, amenities, food services, resort services, rental services, finishes, designs, materials, furnishings, fixtures, appliances, cabinetry, soffits, lighting, countertops, floor plans, specifications, or art contained in this brochure are proposed only and the Developer reserves the right to modify, revise, or withdraw any or all the same in its sole discretion and without prior notice. No water view or other specific view is guaranteed. Views from Units vary depending upon the Unit selected. Dimensions and square footage are approximate and may vary depending on how measured and based upon actual construction. Also, locations and layouts of windows, doors, closets, plumbing fixtures, and structural and architectural design elements may vary from concept to actual construction. The drawings, images, and depictions shown should not be relied upon as representations, express or implied, of the final detail of the Condominium or any Unit. All improvements, designs and construction are subject to first obtaining the appropriate federal, state, and local permits and approvals for same which may require the Developer to alter any design, floor plan, layout, or detail depicted or planned. Art depicted is not included with a Unit purchase and art depicted is not owned by the Association(s) for this Condominium. If art is installed at the Condominium any such art shall be selected by the Developer at the Developer's sole discretion and may be substituted by the Developer or removed; art installed by the Developer shall be deemed to be on loan to the Condominium Association removable by Developer at Developer's election. No art installed is owned by the Condominium Association unless the installation is specifically gifted or sold to the Association by written and signed agreement between the Developer and the Condominium Association. The Prospectus is not a securities or investment offering. No statements or representations have been made by Developer, or any of its agents, employees, or representatives with respect to any potential for future profit, future appreciation in value, investment opportunity potential, rental income potential, or other benefits to be derived from ownership of one or more Units, but if made such statements should not be relied upon in your Unit purchase decision. The Developer, its agents, employees, and representatives are also not tax advisors and statement(s) made with respect to tax benefits of ownership should not be relied upon in your Unit purchase decision. Certain nearby attractions, shopping venues, restaurants, and activities referenced or identified in this publication are off-site and are not controlled by the Developer. Information regarding off-site attractions, developments, and venues, whether existing at the time of this publication or proposed, have been obtained from public records and other sources of public information and there is no guarantee that any off-site attractions, shopping venues, restaurants, and activities will exist as depicted or that there would not be changes or substitutions of the attractions and venues nearby. Pursuant to license agreements, Developer has a right to use the trade names, marks, and logos of: (1) The Related Group; and (2) Two Roads Development, each of which is licensor and neither of which is Developer. The Developer is not incorporated in, located in, nor a resident of, New York. This is not intended to be an offer to sell, or solicitation of an offer to buy, condominium units in New York or to residents of New York, or of any other jurisdiction were prohibited by law. To understand what is included with a Unit purchase, consult the Developer's Prospectus for all terms, conditions, specifications, and Unit dimensions. Reproduction for private or commercial use is not authorized. 2023 © Carlton Terrace Owner LLC, with all rights reserved.

